

MOUSE Bcar1 Antibody (Center)

Affinity Purified Rabbit Polyclonal Antibody (Pab)

Catalog # AP20421c

Product Information

Application	WB, E
Primary Accession	Q61140
Other Accession	Q63767
Reactivity	Mouse
Predicted	Rat
Host	Rabbit
Clonality	Polyclonal
Isotype	Rabbit IgG
Clone Names	RB43089
Calculated MW	94285
Antigen Region	322-348

Additional Information

Gene ID	12927
Other Names	Breast cancer anti-estrogen resistance protein 1, CRK-associated substrate, p130cas, Bcar1, Cas, Crkas
Target/Specificity	This MOUSE Bcar1 antibody is generated from rabbits immunized with a KLH conjugated synthetic peptide between 322-348 amino acids from the Central region of mouse Bcar1.
Dilution	WB~~1:1000 E~~Use at an assay dependent concentration.
Format	Purified polyclonal antibody supplied in PBS with 0.09% (W/V) sodium azide. This antibody is purified through a protein A column, followed by peptide affinity purification.
Storage	Maintain refrigerated at 2-8°C for up to 2 weeks. For long term storage store at -20°C in small aliquots to prevent freeze-thaw cycles.
Precautions	MOUSE Bcar1 Antibody (Center) is for research use only and not for use in diagnostic or therapeutic procedures.

Protein Information

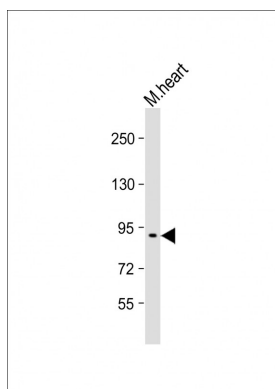
Name	Bcar1
Synonyms	Cas, Crkas

Function	Docking protein which plays a central coordinating role for tyrosine kinase-based signaling related to cell adhesion (By similarity). Implicated in induction of cell migration and cell branching (PubMed: 25499443). Involved in the BCAR3-mediated inhibition of TGFB signaling (PubMed: 25499443).
Cellular Location	Cell junction, focal adhesion. Cytoplasm Cell projection, axon Note=Unphosphorylated form localizes in the cytoplasm (PubMed:22801373). Localizes to focal adhesion sites following integrin engagement (PubMed:22801373).
Tissue Location	Expressed in olfactory sensory neurons (at protein level) (PubMed:20881139). Expressed abundantly in the liver, lung, brain, and at lower levels in the heart (at protein level) (PubMed:19365570).

Background

Docking protein which plays a central coordinating role for tyrosine kinase-based signaling related to cell adhesion. Implicated in induction of cell migration (By similarity). Has been shown to be essential in cardiovascular development during embryogenesis.

Images



Anti-Mouse Bcar1 Antibody (Center) at 1:1000 dilution + mouse heart lysate Lysates/proteins at 20 µg per lane. Secondary Goat Anti-Rabbit IgG, (H+L), Peroxidase conjugated at 1/10000 dilution. Predicted band size : 94kDa Blocking/Dilution buffer: 5% NFDM/TBST.

Please note: All products are 'FOR RESEARCH USE ONLY. NOT FOR USE IN DIAGNOSTIC OR THERAPEUTIC PROCEDURES'.