

TCF7L1 Antibody (N-term)

Affinity Purified Rabbit Polyclonal Antibody (Pab)

Catalog # AP20423a

Product Information

Application	WB, E
Primary Accession	Q9HCS4
Reactivity	Human
Host	Rabbit
Clonality	Polyclonal
Isotype	Rabbit IgG
Clone Names	RB43616
Calculated MW	62631
Antigen Region	70-98

Additional Information

Gene ID	83439
Other Names	Transcription factor 7-like 1, HMG box transcription factor 3, TCF-3, TCF7L1, TCF3
Target/Specificity	This TCF7L1 antibody is generated from rabbits immunized with a KLH conjugated synthetic peptide between 70-98 amino acids from the N-terminal region of human TCF7L1.
Dilution	WB~~1:1000 E~~Use at an assay dependent concentration.
Format	Purified polyclonal antibody supplied in PBS with 0.09% (W/V) sodium azide. This antibody is purified through a protein A column, followed by peptide affinity purification.
Storage	Maintain refrigerated at 2-8°C for up to 2 weeks. For long term storage store at -20°C in small aliquots to prevent freeze-thaw cycles.
Precautions	TCF7L1 Antibody (N-term) is for research use only and not for use in diagnostic or therapeutic procedures.

Protein Information

Name	TCF7L1
Synonyms	TCF3
Function	Participates in the Wnt signaling pathway. Binds to DNA and acts as a repressor in the absence of CTNNB1, and as an activator in its presence.

Necessary for the terminal differentiation of epidermal cells, the formation of keratohyalin granules and the development of the barrier function of the epidermis (By similarity). Down-regulates NQO1, leading to increased mitomycin c resistance.

Cellular Location

Nucleus.

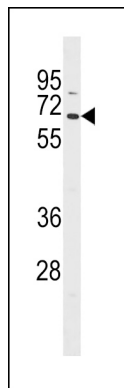
Tissue Location

Detected in hair follicles and skin keratinocytes, and at lower levels in stomach epithelium

Background

Participates in the Wnt signaling pathway. Binds to DNA and acts as a repressor in the absence of CTNNB1, and as an activator in its presence. Necessary for the terminal differentiation of epidermal cells, the formation of keratohyalin granules and the development of the barrier function of the epidermis (By similarity). Down-regulates NQO1, leading to increased mitomycin c resistance.

Images



TCF7L1 Antibody (N-term) (Cat. #AP20423a) western blot analysis in HepG2 cell line lysates (35ug/lane). This demonstrates the TCF7L1 antibody detected the TCF7L1 protein (arrow).

Please note: All products are 'FOR RESEARCH USE ONLY. NOT FOR USE IN DIAGNOSTIC OR THERAPEUTIC PROCEDURES'.