

C1GALT1 Antibody (Center)

Affinity Purified Rabbit Polyclonal Antibody (Pab)

Catalog # AP20432c

Product Information

Application	WB, IHC-P, E
Primary Accession	Q9NS00
Reactivity	Human, Rat, Mouse
Host	Rabbit
Clonality	Polyclonal
Isotype	Rabbit IgG
Calculated MW	42203
Antigen Region	115-144

Additional Information

Gene ID	56913
Other Names	Glycoprotein-N-acetylgalactosamine 3-beta-galactosyltransferase 1, B3Gal-T8, Core 1 O-glycan T-synthase, Core 1 UDP-galactose:N-acetylgalactosamine-alpha-R beta 1, 3-galactosyltransferase 1, Beta-1, 3-galactosyltransferase, Core 1 beta1, 3-galactosyltransferase 1, C1GalT1, Core 1 beta3-Gal-T1, C1GALT1
Target/Specificity	This C1GALT1 antibody is generated from rabbits immunized with a KLH conjugated synthetic peptide between 115-144 amino acids from the Central region of human C1GALT1.
Dilution	WB~~1:1000 IHC-P~~1:100 E~~Use at an assay dependent concentration.
Format	Purified polyclonal antibody supplied in PBS with 0.05% (V/V) Proclin 300. This antibody is purified through a protein A column, followed by peptide affinity purification.
Storage	Maintain refrigerated at 2-8°C for up to 2 weeks. For long term storage store at -20°C in small aliquots to prevent freeze-thaw cycles.
Precautions	C1GALT1 Antibody (Center) is for research use only and not for use in diagnostic or therapeutic procedures.

Protein Information

Name	C1GALT1
Function	Glycosyltransferase that generates the core 1 O-glycan Gal-beta1-3GalNAc-alpha1-Ser/Thr (T antigen), which is a precursor for many

extended O-glycans in glycoproteins (PubMed:[11677243](#)). Plays a central role in many processes, such as angiogenesis, thrombopoiesis and kidney homeostasis development (By similarity).

Cellular Location

Membrane {ECO:0000250|UniProtKB:Q9JJ05}; Single-pass type II membrane protein

Tissue Location

Widely expressed. Highly expressed in kidney, heart, placenta and liver.

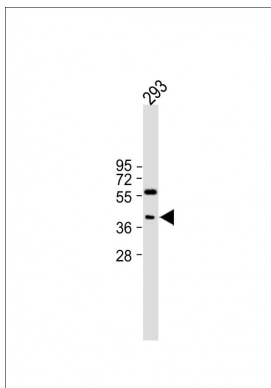
Background

Glycosyltransferase that generates the core 1 O-glycan Gal-beta1-3GalNAc-alpha1-Ser/Thr (T antigen), which is a precursor for many extended O-glycans in glycoproteins. Plays a central role in many processes, such as angiogenesis, thrombopoiesis and kidney homeostasis development.

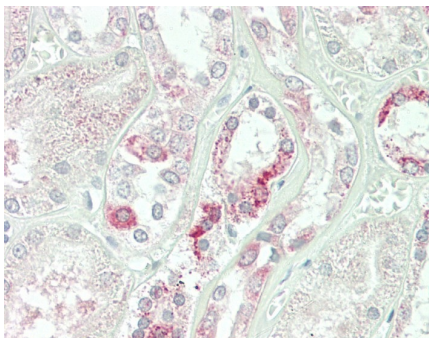
References

- Ju T., et al. J. Biol. Chem. 277:178-186(2002).
Jensen M.P.A., et al. Submitted (JUN-1999) to the EMBL/GenBank/DDBJ databases.
Hillier L.W., et al. Nature 424:157-164(2003).
Scherer S.W., et al. Science 300:767-772(2003).
Ju T., et al. Proc. Natl. Acad. Sci. U.S.A. 99:16613-16618(2002).

Images



All lanes : Anti-C1GALT1 Antibody (Center) at 1:1000 dilution Lane 1: 293 whole cell lysate Lysates/proteins at 20 µg per lane. Secondary Goat Anti-Rabbit IgG, (H+L), Peroxidase conjugated at 1/10000 dilution. Observed band size : 42kDa Blocking/Dilution buffer: 5% NFDm/TBST.



Formalin-fixed and paraffin-embedded H.kidney tissue reacted with C1GALT1 Antibody (Center) (Cat#AP20432c).

Please note: All products are 'FOR RESEARCH USE ONLY. NOT FOR USE IN DIAGNOSTIC OR THERAPEUTIC PROCEDURES'.