

ZRSR2 Antibody (C-term)

Affinity Purified Rabbit Polyclonal Antibody (Pab)

Catalog # AP20436b

Product Information

Application	WB, IHC-P, E
Primary Accession	Q15696
Reactivity	Human, Rat, Mouse
Host	Rabbit
Clonality	Polyclonal
Isotype	Rabbit IgG
Calculated MW	58045
Antigen Region	453-482

Additional Information

Gene ID	8233
Other Names	U2 small nuclear ribonucleoprotein auxiliary factor 35 kDa subunit-related protein 2, CCH type zinc finger, RNA-binding motif and serine/arginine rich protein 2, Renal carcinoma antigen NY-REN-20, U2(RNU2) small nuclear RNA auxiliary factor 1-like 2, U2AF35-related protein, URP, ZRSR2, U2AF1-RS2, U2AF1L2, U2AF1RS2, URP
Target/Specificity	This ZRSR2 antibody is generated from rabbits immunized with a KLH conjugated synthetic peptide between 453-482 amino acids from the C-terminal region of human ZRSR2.
Dilution	WB~~1:1000 IHC-P~~1:100~500 E~~Use at an assay dependent concentration.
Format	Purified polyclonal antibody supplied in PBS with 0.05% (V/V) Proclin 300. This antibody is prepared by Saturated Ammonium Sulfate (SAS) precipitation followed by dialysis against PBS.
Storage	Maintain refrigerated at 2-8°C for up to 2 weeks. For long term storage store at -20°C in small aliquots to prevent freeze-thaw cycles.
Precautions	ZRSR2 Antibody (C-term) is for research use only and not for use in diagnostic or therapeutic procedures.

Protein Information

Name	ZRSR2
Synonyms	U2AF1-RS2, U2AF1L2, U2AF1RS2, URP

Function	Pre-mRNA-binding protein required for splicing of both U2- and U12-type introns. Selectively interacts with the 3'-splice site of U2- and U12-type pre-mRNAs and promotes different steps in U2 and U12 intron splicing. Recruited to U12 pre-mRNAs in an ATP-dependent manner and is required for assembly of the pre-spliceosome, a precursor to other spliceosomal complexes. For U2-type introns, it is selectively and specifically required for the second step of splicing.
Cellular Location	Nucleus.
Tissue Location	Widely expressed..

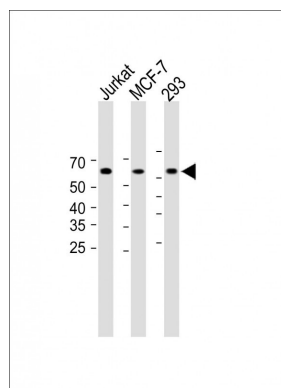
Background

Pre-mRNA-binding protein required for splicing of both U2-and U12-type introns. Selectively interacts with the 3'-splice site of U2-and U12-type pre-mRNAs and promotes different steps in U2 and U12 intron splicing. Recruited to U12 pre-mRNAs in an ATP-dependent manner and is required for assembly of the prespliceosome, a precursor to other spliceosomal complexes. For U2-type introns, it is selectively and specifically required for the second step of splicing.

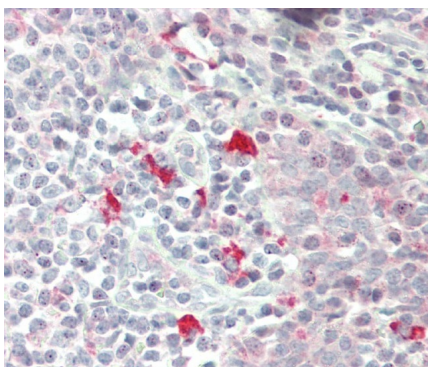
References

Kitagawa K., et al. Genomics 30:257-263(1995).
 Ross M.T., et al. Nature 434:325-337(2005).
 Tronchere H., et al. Nature 388:397-400(1997).
 Scanlan M.J., et al. Int. J. Cancer 83:456-464(1999).
 Will C.L., et al. RNA 10:929-941(2004).

Images



All lanes : Anti-ZRSR2 Antibody (C-term) at 1:1000 dilution
 Lane 1: Jurkat whole cell lysate Lane 2: MCF-7 whole cell lysate Lane 3: 293 whole cell lysate Lysates/proteins at 20 µg per lane. Secondary Goat Anti-Rabbit IgG, (H+L), Peroxidase conjugated (ASP1615) at 1/15000 dilution.
 Observed band size : 58kDa Blocking/Dilution buffer: 13% NFDM/TBST.



Formalin-fixed and paraffin-embedded H.tonsil tissue reacted with ZRSR2 Antibody (C-term) (Cat#AP20436b).

Please note: All products are 'FOR RESEARCH USE ONLY. NOT FOR USE IN DIAGNOSTIC OR THERAPEUTIC PROCEDURES'.