

# SEMA6B Antibody (C-term)

Affinity Purified Rabbit Polyclonal Antibody (Pab)

Catalog # AP20439b

## Product Information

---

Application	WB, E
Primary Accession	<a href="#">Q9H3T3</a>
Reactivity	Human, Rat, Mouse
Host	Rabbit
Clonality	Polyclonal
Isotype	Rabbit IgG
Calculated MW	95285
Antigen Region	830-859

## Additional Information

---

Gene ID	10501
Other Names	Semaphorin-6B, Semaphorin-Z, Sema Z, SEMA6B, SEMAN, SEMAZ
Target/Specificity	This SEMA6B antibody is generated from rabbits immunized with a KLH conjugated synthetic peptide between 830-859 amino acids from the C-terminal region of human SEMA6B.
Dilution	WB~~1:1000 E~~Use at an assay dependent concentration.
Format	Purified polyclonal antibody supplied in PBS with 0.09% (W/V) sodium azide. This antibody is purified through a protein A column, followed by peptide affinity purification.
Storage	Maintain refrigerated at 2-8°C for up to 2 weeks. For long term storage store at -20°C in small aliquots to prevent freeze-thaw cycles.
Precautions	SEMA6B Antibody (C-term) is for research use only and not for use in diagnostic or therapeutic procedures.

## Protein Information

---

Name	SEMA6B
Synonyms	SEMAN, SEMAZ
Function	Functions as a cell surface repellent for mossy fibers of developing neurons in the hippocampus where it plays a role in axon guidance. May function through the PLXNA4 receptor expressed by mossy cell axons.

**Cellular Location** Cell membrane; Single-pass type I membrane protein

**Tissue Location** Expressed in the brain in GABAergic neurons.

## Background

---

May play a role in both peripheral and central nervous system development (By similarity).

## References

---

Kimura T., et al. Submitted (JAN-1999) to the EMBL/GenBank/DDBJ databases.

Correa R.G., et al. Genomics 73:343-348(2001).

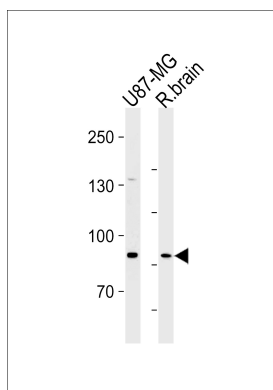
Clark H.F., et al. Genome Res. 13:2265-2270(2003).

Mural R.J., et al. Submitted (SEP-2005) to the EMBL/GenBank/DDBJ databases.

Zhang Z., et al. Protein Sci. 13:2819-2824(2004).

## Images

---



SEMA6B Antibody (C-term) (Cat. #AP20439b) western blot analysis in U87-MG cell line and rat brain lysates (35ug/lane). This demonstrates the SEMA6B antibody detected the SEMA6B protein (arrow).

Please note: All products are 'FOR RESEARCH USE ONLY. NOT FOR USE IN DIAGNOSTIC OR THERAPEUTIC PROCEDURES'.