

FAM159A Antibody (Center)

Affinity Purified Rabbit Polyclonal Antibody (Pab)

Catalog # AP20445c

Product Information

Application	WB, IF, E
Primary Accession	Q6UWV7
Reactivity	Human, Mouse
Host	Rabbit
Clonality	Polyclonal
Isotype	Rabbit IgG
Calculated MW	20306
Antigen Region	89-115

Additional Information

Gene ID	348378
Other Names	Membrane protein FAM159A, FAM159A
Target/Specificity	This FAM159A antibody is generated from rabbits immunized with a KLH conjugated synthetic peptide between 89-115 amino acids from the Central region of human FAM159A.
Dilution	WB~~1:1000 IF~~1:25 E~~Use at an assay dependent concentration.
Format	Purified polyclonal antibody supplied in PBS with 0.09% (W/V) sodium azide. This antibody is purified through a protein A column, followed by peptide affinity purification.
Storage	Maintain refrigerated at 2-8°C for up to 2 weeks. For long term storage store at -20°C in small aliquots to prevent freeze-thaw cycles.
Precautions	FAM159A Antibody (Center) is for research use only and not for use in diagnostic or therapeutic procedures.

Protein Information

Name	SHISAL2A (HGNC:28757)
Synonyms	FAM159A
Cellular Location	Membrane; Multi-pass membrane protein

Background

The exact function of this protein remains unknown.

References

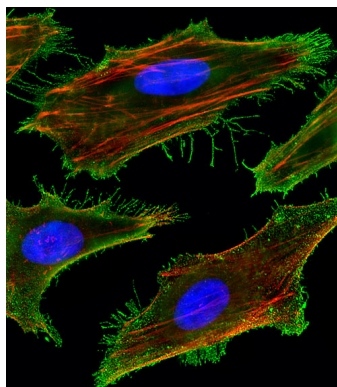
Clark H.F., et al. Genome Res. 13:2265-2270(2003).

Ota T., et al. Nat. Genet. 36:40-45(2004).

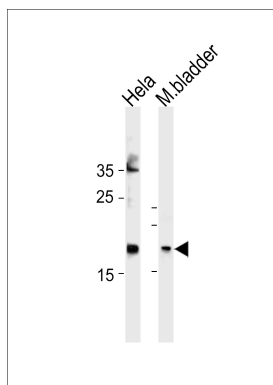
Mural R.J., et al. Submitted (SEP-2005) to the EMBL/GenBank/DDBJ databases.

Gregory S.G., et al. Nature 441:315-321(2006).

Images



Fluorescent image of HeLa cells stained with FAM159A Antibody (Center)(Cat#AP20445c). AP20445c was diluted at 1:25 dilution. An Alexa Fluor 488-conjugated goat anti-rabbit IgG at 1:400 dilution was used as the secondary antibody (green). DAPI was used to stain the cell nuclear (blue) . Cytoplasmic actin was counterstained with Alexa Fluor® 555 conjugated with Phalloidin (red).



FAM159A Antibody (Center) (Cat. #AP20445c) western blot analysis in HeLa cell line and mouse bladder tissue lysates (35ug/lane).This demonstrates the FAM159A antibody detected the FAM159A protein (arrow).

Please note: All products are 'FOR RESEARCH USE ONLY. NOT FOR USE IN DIAGNOSTIC OR THERAPEUTIC PROCEDURES'.