

FAM50A Antibody (C-term)

Affinity Purified Rabbit Polyclonal Antibody (Pab)

Catalog # AP20449b

Product Information

Application	WB, IF, E
Primary Accession	Q14320
Other Accession	Q9WV03 , Q568K9 , Q4KLV7 , Q2VPH1
Reactivity	Human, Mouse
Predicted	Xenopus, Zebrafish, Mouse
Host	Rabbit
Clonality	Polyclonal
Isotype	Rabbit IgG
Calculated MW	40242
Antigen Region	311-339

Additional Information

Gene ID	9130
Other Names	Protein FAM50A, Protein HXC-26, Protein XAP-5, FAM50A, DXS9928E, HXC26, XAP5
Target/Specificity	This FAM50A antibody is generated from rabbits immunized with a KLH conjugated synthetic peptide between 311-339 amino acids from the C-terminal region of human FAM50A.
Dilution	WB~~1:1000 IF~~1:25 E~~Use at an assay dependent concentration.
Format	Purified polyclonal antibody supplied in PBS with 0.09% (W/V) sodium azide. This antibody is purified through a protein A column, followed by peptide affinity purification.
Storage	Maintain refrigerated at 2-8°C for up to 2 weeks. For long term storage store at -20°C in small aliquots to prevent freeze-thaw cycles.
Precautions	FAM50A Antibody (C-term) is for research use only and not for use in diagnostic or therapeutic procedures.

Protein Information

Name	FAM50A
Synonyms	DXS9928E, HXC26, XAP5
Function	Probably involved in the regulation of pre-mRNA splicing.

Cellular Location

Nucleus.

Tissue Location

Widely expressed in fetal and adult tissues. Mostly abundant in fetal brain, liver and kidney; in the adult, high levels were also observed in heart, skeletal muscle, spleen, thymus, prostate and small intestine. Expressed in fetal cerebellum and hypothalamus Low expression is observed in fetal temporal lobe (PubMed:32703943)

Background

May be a DNA-binding protein or transcriptional factor.

References

Mazzarella R., et al. Genomics 45:216-219(1997).

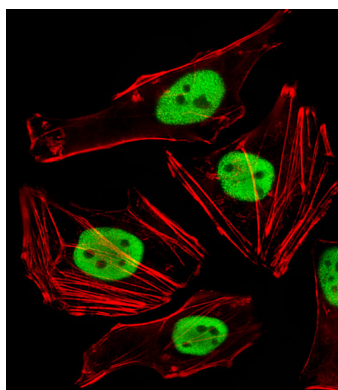
Ota T., et al. Nat. Genet. 36:40-45(2004).

Ross M.T., et al. Nature 434:325-337(2005).

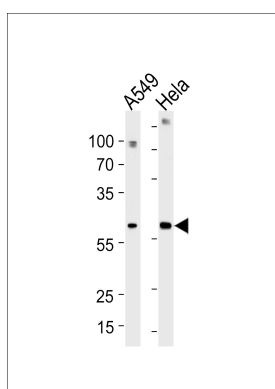
Mural R.J., et al. Submitted (SEP-2005) to the EMBL/GenBank/DDBJ databases.

Toyoda A., et al. DNA Res. 3:337-340(1996).

Images



Fluorescent image of HeLa cells stained with FAM50A Antibody (C-term)(Cat#AP20449b). AP20449b was diluted at 1:25 dilution. An Alexa Fluor 488-conjugated goat anti-rabbit IgG at 1:400 dilution was used as the secondary antibody (green). Cytoplasmic actin was counterstained with Alexa Fluor® 555 conjugated with Phalloidin (red).



FAM50A Antibody (C-term) (Cat. #AP20449b) western blot analysis in A549, HeLa cell line lysates (35ug/lane). This demonstrates the FAM50A antibody detected the FAM50A protein (arrow).

Please note: All products are 'FOR RESEARCH USE ONLY. NOT FOR USE IN DIAGNOSTIC OR THERAPEUTIC PROCEDURES'.