

PTGER4 Antibody (Center)

Affinity Purified Rabbit Polyclonal Antibody (Pab)

Catalog # AP20451c

Product Information

Application	WB, IHC-P, E
Primary Accession	P35408
Other Accession	P43114 , Q28691 , P32240 , Q8MJ08
Reactivity	Human, Rat, Mouse
Predicted	Bovine, Rabbit, Rat
Host	Rabbit
Clonality	Polyclonal
Isotype	Rabbit IgG
Calculated MW	53119
Antigen Region	242-269

Additional Information

Gene ID	5734
Other Names	Prostaglandin E2 receptor EP4 subtype, PGE receptor EP4 subtype, PGE2 receptor EP4 subtype, Prostanoid EP4 receptor, PTGER4, PTGER2
Target/Specificity	This PTGER4 antibody is generated from rabbits immunized with a KLH conjugated synthetic peptide between 242-269 amino acids from the Central region of human PTGER4.
Dilution	WB~~1:1000 IHC-P~~1:100~500 E~~Use at an assay dependent concentration.
Format	Purified polyclonal antibody supplied in PBS with 0.09% (W/V) sodium azide. This antibody is purified through a protein A column, followed by peptide affinity purification.
Storage	Maintain refrigerated at 2-8°C for up to 2 weeks. For long term storage store at -20°C in small aliquots to prevent freeze-thaw cycles.
Precautions	PTGER4 Antibody (Center) is for research use only and not for use in diagnostic or therapeutic procedures.

Protein Information

Name	PTGER4
Synonyms	PTGER2
Function	Receptor for prostaglandin E2 (PGE2). The activity of this receptor is

mediated by G(s) proteins that stimulate adenylate cyclase. Has a relaxing effect on smooth muscle. May play an important role in regulating renal hemodynamics, intestinal epithelial transport, adrenal aldosterone secretion, and uterine function.

Cellular Location

Cell membrane; Multi-pass membrane protein.

Tissue Location

High in intestine and in peripheral blood mononuclear cells; low in lung, kidney, thymus, uterus, vasculature and brain. Not found in liver, heart, retina or skeletal muscle

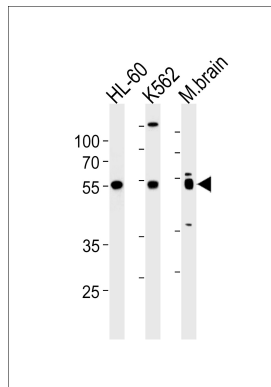
Background

Receptor for prostaglandin E2 (PGE2). The activity of this receptor is mediated by G(s) proteins that stimulate adenylate cyclase. Has a relaxing effect on smooth muscle. May play an important role in regulating renal hemodynamics, intestinal epithelial transport, adrenal aldosterone secretion, and uterine function.

References

Bastien L., et al. J. Biol. Chem. 269:11873-11877(1994).
An S., et al. Biochem. Biophys. Res. Commun. 197:263-270(1993).
Foord S.M., et al. Genomics 35:182-188(1996).
Mori K., et al. J. Mol. Med. 74:333-336(1996).
Kopatz S.A., et al. Submitted (OCT-2003) to the EMBL/GenBank/DDBJ databases.

Images



PTGER4 Antibody (Center) (Cat. #AP20451c) western blot analysis in HL-60, K562 cell line and mouse brain lysates (35ug/lane). This demonstrates the PTGER4 antibody detected the PTGER4 protein (arrow).

Please note: All products are 'FOR RESEARCH USE ONLY. NOT FOR USE IN DIAGNOSTIC OR THERAPEUTIC PROCEDURES'.