

RPL29 Antibody (Center)

Affinity Purified Rabbit Polyclonal Antibody (Pab)

Catalog # AP20452c

Product Information

Application	WB, E
Primary Accession	P47914
Other Accession	Q8HXB8
Reactivity	Human
Predicted	Monkey
Host	Rabbit
Clonality	Polyclonal
Isotype	Rabbit IgG
Calculated MW	17752
Antigen Region	71-98

Additional Information

Gene ID	6159
Other Names	60S ribosomal protein L29, Cell surface heparin-binding protein HIP, RPL29
Target/Specificity	This RPL29 antibody is generated from rabbits immunized with a KLH conjugated synthetic peptide between 71-98 amino acids from the Central region of human RPL29.
Dilution	WB~~1:1000 E~~Use at an assay dependent concentration.
Format	Purified polyclonal antibody supplied in PBS with 0.09% (W/V) sodium azide. This antibody is purified through a protein A column, followed by peptide affinity purification.
Storage	Maintain refrigerated at 2-8°C for up to 2 weeks. For long term storage store at -20°C in small aliquots to prevent freeze-thaw cycles.
Precautions	RPL29 Antibody (Center) is for research use only and not for use in diagnostic or therapeutic procedures.

Protein Information

Name	RPL29
Function	Component of the large ribosomal subunit (PubMed: 12962325 , PubMed: 23636399 , PubMed: 32669547). The ribosome is a large ribonucleoprotein complex responsible for the synthesis of proteins in the cell (PubMed: 12962325 , PubMed: 23636399 , PubMed: 32669547).

References

Law P.T., et al. Submitted (JUN-1994) to the EMBL/GenBank/DDBJ databases.

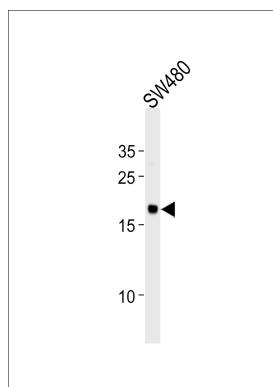
Law P.T., et al. Biochim. Biophys. Acta 1305:105-108(1996).

Liu S., et al. J. Biol. Chem. 271:11817-11823(1996).

Ota T., et al. Nat. Genet. 36:40-45(2004).

Odintsova T.I., et al. J. Protein Chem. 22:249-258(2003).

Images



RPL29 Antibody (Center) (Cat. #AP20452c) western blot analysis in SW480 cell line lysates (35ug/lane). This demonstrates the RPL29 antibody detected the RPL29 protein (arrow).

Citations

- [Knockdown RPL29 Gene Can Inhibit the Proliferation, Invasion of Squamous Cell Carcinomas.](#)

Please note: All products are 'FOR RESEARCH USE ONLY. NOT FOR USE IN DIAGNOSTIC OR THERAPEUTIC PROCEDURES'.