

SIRPB1 Antibody (N-term)

Affinity Purified Rabbit Polyclonal Antibody (Pab)

Catalog # AP20454a

Product Information

Application	WB, IHC-P, E
Primary Accession	Q5TFQ8
Reactivity	Human
Host	Rabbit
Clonality	Polyclonal
Isotype	Rabbit IgG
Calculated MW	43359
Antigen Region	17-43

Additional Information

Gene ID	10326
Other Names	Signal-regulatory protein beta-1 isoform 3, SIRP-beta-1 isoform 3, SIRPB1
Target/Specificity	This SIRPB1 antibody is generated from rabbits immunized with a KLH conjugated synthetic peptide between 17-43 amino acids from the N-terminal region of human SIRPB1.
Dilution	WB~~1:1000 IHC-P~~1:100~500 E~~Use at an assay dependent concentration.
Format	Purified polyclonal antibody supplied in PBS with 0.05% (V/V) Proclin 300. This antibody is prepared by Saturated Ammonium Sulfate (SAS) precipitation followed by dialysis against PBS.
Storage	Maintain refrigerated at 2-8°C for up to 2 weeks. For long term storage store at -20°C in small aliquots to prevent freeze-thaw cycles.
Precautions	SIRPB1 Antibody (N-term) is for research use only and not for use in diagnostic or therapeutic procedures.

Protein Information

Name	SIRPB1
Function	Immunoglobulin-like cell surface receptor involved in the negative regulation of receptor tyrosine kinase-coupled signaling processes.
Cellular Location	Membrane; Single-pass type I membrane protein.

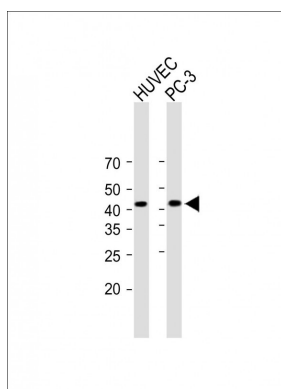
Background

Immunoglobulin-like cell surface receptor involved in the negative regulation of receptor tyrosine kinase-coupled signaling processes (By similarity).

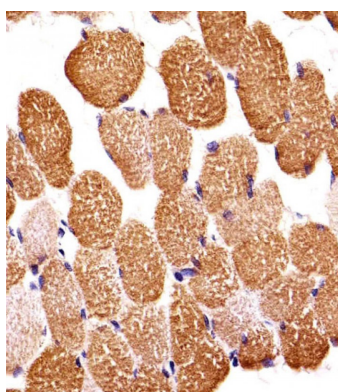
References

Ota T., et al. Nat. Genet. 36:40-45(2004).
Bechtel S., et al. BMC Genomics 8:399-399(2007).
Deloukas P., et al. Nature 414:865-871(2001).
Hatherley D., et al. Mol. Cell 31:266-277(2008).

Images



All lanes : Anti-SIRPB1 Antibody (N-term) at 1:2000 dilution Lane 1: HUVEC whole cell lysate Lane 2: PC-3 whole cell lysate Lysates/proteins at 20 µg per lane. Secondary Goat Anti-Rabbit IgG, (H+L), Peroxidase conjugated (ASP1615) at 1/15000 dilution. Observed band size : 43kDa Blocking/Dilution buffer: 5% NFDM/TBST.



Immunohistochemical analysis of paraffin-embedded H. skeletal muscle section using SIRPB1 Antibody (N-term)(Cat#AP20454a). AP20454a was diluted at 1:25 dilution. A undiluted biotinylated goat polyvalent antibody was used as the secondary, followed by DAB staining.

Please note: All products are 'FOR RESEARCH USE ONLY. NOT FOR USE IN DIAGNOSTIC OR THERAPEUTIC PROCEDURES'.