

SDHA Antibody (C-term)

Affinity Purified Rabbit Polyclonal Antibody (Pab)

Catalog # AP20458b

Product Information

Application	WB, IHC-P, E
Primary Accession	P31040
Other Accession	Q920L2 , Q6PA58
Reactivity	Human, Rat, Mouse
Predicted	Xenopus, Rat
Host	Rabbit
Clonality	Polyclonal
Isotype	Rabbit IgG
Calculated MW	72692
Antigen Region	577-605

Additional Information

Gene ID	6389
Other Names	Succinate dehydrogenase [ubiquinone] flavoprotein subunit, mitochondrial, Flavoprotein subunit of complex II, Fp, SDHA, SDH2, SDHF
Target/Specificity	This SDHA antibody is generated from rabbits immunized with a KLH conjugated synthetic peptide between 577-605 amino acids from the C-terminal region of human SDHA.
Dilution	WB~~1:1000 IHC-P~~1:100~500 E~~Use at an assay dependent concentration.
Format	Purified polyclonal antibody supplied in PBS with 0.09% (W/V) sodium azide. This antibody is purified through a protein A column, followed by peptide affinity purification.
Storage	Maintain refrigerated at 2-8°C for up to 2 weeks. For long term storage store at -20°C in small aliquots to prevent freeze-thaw cycles.
Precautions	SDHA Antibody (C-term) is for research use only and not for use in diagnostic or therapeutic procedures.

Protein Information

Name	SDHA
Synonyms	SDH2, SDHF
Function	Flavoprotein (FP) subunit of succinate dehydrogenase (SDH) that is involved

in complex II of the mitochondrial electron transport chain and is responsible for transferring electrons from succinate to ubiquinone (coenzyme Q) (PubMed:[10746566](#), PubMed:[24781757](#)). SDH also oxidizes malate to the non-canonical enol form of oxaloacetate, enol- oxaloacetate (By similarity). Enol-oxaloacetate, which is a potent inhibitor of the succinate dehydrogenase activity, is further isomerized into keto-oxaloacetate (By similarity). Can act as a tumor suppressor (PubMed:[20484225](#)).

Cellular Location

Mitochondrion inner membrane; Peripheral membrane protein; Matrix side

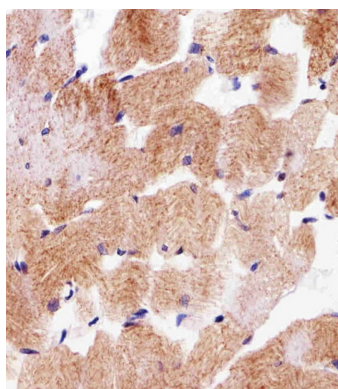
Background

Flavoprotein (FP) subunit of succinate dehydrogenase (SDH) that is involved in complex II of the mitochondrial electron transport chain and is responsible for transferring electrons from succinate to ubiquinone (coenzyme Q). Can act as a tumor suppressor.

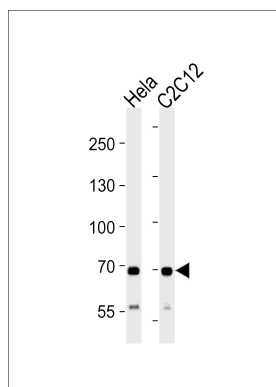
References

Hirawake H., et al. J. Biochem. 116:221-227(1994).
Morris A.A.M., et al. Biochim. Biophys. Acta 1185:125-128(1994).
Parfait B., et al. Hum. Genet. 106:236-243(2000).
Ota T., et al. Nat. Genet. 36:40-45(2004).
Mural R.J., et al. Submitted (JUL-2005) to the EMBL/GenBank/DDBJ databases.

Images



Immunohistochemical analysis of paraffin-embedded H. skeletal muscle section using SDHA Antibody (C-term)(Cat#AP20458B). AP20458B was diluted at 1:25 dilution. A undiluted biotinylated goat polyvalent antibody was used as the secondary, followed by DAB staining.



SDHA Antibody (C-term) (Cat. #AP20458b) western blot analysis in HeLa and mouse C2C12 cell line lysates (35ug/lane). This demonstrates the SDHA antibody detected the SDHA protein (arrow).

Please note: All products are 'FOR RESEARCH USE ONLY. NOT FOR USE IN DIAGNOSTIC OR THERAPEUTIC PROCEDURES'.