

CDCA7L Antibody (C-term)

Affinity Purified Rabbit Polyclonal Antibody (Pab)

Catalog # AP20468b

Product Information

Application	WB, E
Primary Accession	B3KTR5
Other Accession	Q96GN5
Reactivity	Human
Host	Rabbit
Clonality	Polyclonal
Isotype	Rabbit IgG
Antigen Region	290-317

Additional Information

Other Names	CDCA7L;HR1;JPO2; R1; Cell division cycle-associated 7-like protein; Cell division cycle-associated 7-like protein; Protein JPO2; Cell division cycle-associated 7-like protein; Transcription factor RAM2
Target/Specificity	This CDCA7L antibody is generated from rabbits immunized with a KLH conjugated synthetic peptide between 290-317 amino acids from the C-terminal region of human CDCA7L.
Dilution	WB~~1:1000 E~~Use at an assay dependent concentration.
Format	Purified polyclonal antibody supplied in PBS with 0.09% (W/V) sodium azide. This antibody is purified through a protein A column, followed by peptide affinity purification.
Storage	Maintain refrigerated at 2-8°C for up to 2 weeks. For long term storage store at -20°C in small aliquots to prevent freeze-thaw cycles.
Precautions	CDCA7L Antibody (C-term) is for research use only and not for use in diagnostic or therapeutic procedures.

Protein Information

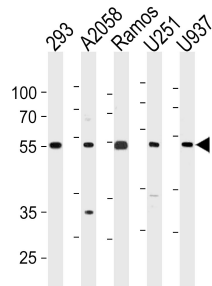
Background

Plays a role in transcriptional regulation as a repressor that inhibits monoamine oxidase A (MAOA) activity and gene expression by binding to the promoter. Plays an important oncogenic role in mediating the full transforming effect of MYC in medulloblastoma cells. Involved in apoptotic signaling pathways; May act downstream of P38-kinase and BCL-2, but upstream of CASP3/caspase-3 as well as CCND1/cyclin D1 and E2F1.

References

Huang A., et al. Cancer Res. 65:5607-5619(2005).
Chen K., et al. J. Biol. Chem. 280:11552-11559(2005).
Cathomen T., et al. Submitted (OCT-2002) to the EMBL/GenBank/DDBJ databases.
Ota T., et al. Nat. Genet. 36:40-45(2004).
Scherer S.W., et al. Science 300:767-772(2003).

Images



CDCA7L Antibody (C-term) (Cat. #AP20468b) western blot analysis in 293,A2058,Ramos,U251,U937 cell line lysates (35ug/lane).This demonstrates the CDCA7L antibody detected the CDCA7L protein (arrow).

Please note: All products are 'FOR RESEARCH USE ONLY. NOT FOR USE IN DIAGNOSTIC OR THERAPEUTIC PROCEDURES'.