

RPS21 Antibody (C-term)

Affinity Purified Rabbit Polyclonal Antibody (Pab)

Catalog # AP20470b

Product Information

Application	WB, E
Primary Accession	P63220
Other Accession	P05765 , P63221 , Q9CQR2 , Q32PB8
Reactivity	Human, Rat, Mouse
Predicted	Bovine, Mouse, Pig, Rat
Host	Rabbit
Clonality	Polyclonal
Isotype	Rabbit IgG
Calculated MW	9111
Antigen Region	44-71

Additional Information

Gene ID	6227
Other Names	40S ribosomal protein S21, RPS21
Target/Specificity	This RPS21 antibody is generated from rabbits immunized with a KLH conjugated synthetic peptide between 44-71 amino acids from the C-terminal region of human RPS21.
Dilution	WB~~1:1000 E~~Use at an assay dependent concentration.
Format	Purified polyclonal antibody supplied in PBS with 0.09% (W/V) sodium azide. This antibody is purified through a protein A column, followed by peptide affinity purification.
Storage	Maintain refrigerated at 2-8°C for up to 2 weeks. For long term storage store at -20°C in small aliquots to prevent freeze-thaw cycles.
Precautions	RPS21 Antibody (C-term) is for research use only and not for use in diagnostic or therapeutic procedures.

Protein Information

Name	RPS21
Function	Component of the small ribosomal subunit (PubMed: 23636399 , PubMed: 25901680 , PubMed: 25957688). The ribosome is a large ribonucleoprotein complex responsible for the synthesis of proteins in the cell (PubMed: 23636399 , PubMed: 25901680 , PubMed: 25957688).

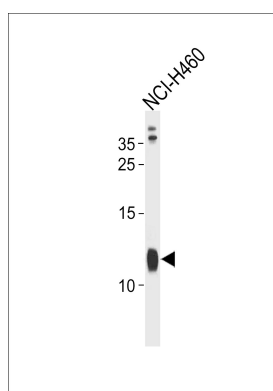
Cellular Location

Cytoplasm, cytosol. Cytoplasm Rough endoplasmic reticulum
{ECO:0000250|UniProtKB:P63221} Note=Detected on cytosolic polysomes (PubMed:25957688). Detected in ribosomes that are associated with the rough endoplasmic reticulum (By similarity).
{ECO:0000250|UniProtKB:P63221, ECO:0000269|PubMed:25957688}

References

Bhat K.S., et al. Nucleic Acids Res. 21:2939-2939(1993).
Smirnova E.V., et al. Bioorg. Khim. 26:392-396(2000).
Yoshihama M., et al. Genome Res. 12:379-390(2002).
Deloukas P., et al. Nature 414:865-871(2001).
Kenmochi N., et al. Genome Res. 8:509-523(1998).

Images



RPS21 Antibody (C-term) (Cat. #AP20470b) western blot analysis in NCI-H460 cell line lysates (35ug/lane). This demonstrates the RPS21 antibody detected the RPS21 protein (arrow).

Please note: All products are 'FOR RESEARCH USE ONLY. NOT FOR USE IN DIAGNOSTIC OR THERAPEUTIC PROCEDURES'.