

# SAP30BP Antibody (Center)

Affinity Purified Rabbit Polyclonal Antibody (Pab)

Catalog # AP20471c

## Product Information

---

Application	WB, IF, E
Primary Accession	<a href="#">Q9UHR5</a>
Other Accession	<a href="#">Q02614</a>
Reactivity	Human, Mouse
Predicted	Mouse
Host	Rabbit
Clonality	Polyclonal
Isotype	Rabbit IgG
Calculated MW	33870
Antigen Region	160-188

## Additional Information

---

Gene ID	29115
Other Names	SAP30-binding protein, Transcriptional regulator protein HCNGP, SAP30BP {ECO:0000312   EMBL:AAH075921}
Target/Specificity	This SAP30BP antibody is generated from rabbits immunized with a KLH conjugated synthetic peptide between 160-188 amino acids from the Central region of human SAP30BP.
Dilution	WB~~1:1000 IF~~1:25 E~~Use at an assay dependent concentration.
Format	Purified polyclonal antibody supplied in PBS with 0.09% (W/V) sodium azide. This antibody is purified through a protein A column, followed by peptide affinity purification.
Storage	Maintain refrigerated at 2-8°C for up to 2 weeks. For long term storage store at -20°C in small aliquots to prevent freeze-thaw cycles.
Precautions	SAP30BP Antibody (Center) is for research use only and not for use in diagnostic or therapeutic procedures.

## Protein Information

---

Name	SAP30BP {ECO:0000312   EMBL:AAH07592.1}
Function	Plays a role in transcriptional repression by promoting histone deacetylase activity, leading to deacetylation of histone H3 (PubMed: <a href="#">21221920</a> ). May be involved in the regulation of beta-2- microglobulin genes (By similarity).

## Background

---

Induces cell death. May act as a transcriptional corepressor of a gene related to cell survival. May be involved in the regulation of beta-2-microglobulin genes.

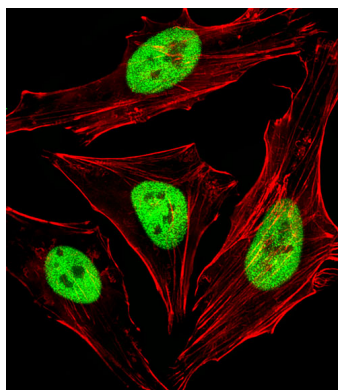
## References

---

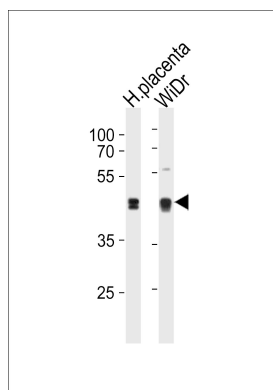
Li J.-F., et al. J. Biochem. 136:169-176(2004).  
Gou D., et al. Submitted (MAR-2002) to the EMBL/GenBank/DDBJ databases.  
Ding J.B., et al. Submitted (APR-2002) to the EMBL/GenBank/DDBJ databases.  
Hu R.-M., et al. Proc. Natl. Acad. Sci. U.S.A. 97:9543-9548(2000).  
Ota T., et al. Nat. Genet. 36:40-45(2004).

## Images

---



Fluorescent image of HeLa cells stained with SAP30BP Antibody (Center)(Cat#AP20471C). AP20471C was diluted at 1:25 dilution. An Alexa Fluor 488-conjugated goat anti-rabbit IgG at 1:400 dilution was used as the secondary antibody (green). Cytoplasmic actin was counterstained with Alexa Fluor® 555 conjugated with Phalloidin (red).



SAP30BP Antibody (Center) (Cat. #AP20471c) western blot analysis in WiDr cell line and human placenta tissue lysates (35ug/lane). This demonstrates the SAP30BP antibody detected the SAP30BP protein (arrow).

Please note: All products are 'FOR RESEARCH USE ONLY. NOT FOR USE IN DIAGNOSTIC OR THERAPEUTIC PROCEDURES'.