

NDUFB10 Antibody (Center)

Affinity Purified Rabbit Polyclonal Antibody (Pab)

Catalog # AP20477c

Product Information

Application	WB, E
Primary Accession	Q96000
Other Accession	Q9DCS9
Reactivity	Human, Mouse
Predicted	Mouse
Host	Rabbit
Clonality	Polyclonal
Isotype	Rabbit IgG
Calculated MW	20777
Antigen Region	43-70

Additional Information

Gene ID	4716
Other Names	NADH dehydrogenase [ubiquinone] 1 beta subcomplex subunit 10, Complex I-PDSW, CI-PDSW, NADH-ubiquinone oxidoreductase PDSW subunit, NDUFB10
Target/Specificity	This NDUFB10 antibody is generated from rabbits immunized with a KLH conjugated synthetic peptide between 43-70 amino acids from the Central region of human NDUFB10.
Dilution	WB~~1:1000 E~~Use at an assay dependent concentration.
Format	Purified polyclonal antibody supplied in PBS with 0.09% (W/V) sodium azide. This antibody is purified through a protein A column, followed by peptide affinity purification.
Storage	Maintain refrigerated at 2-8°C for up to 2 weeks. For long term storage store at -20°C in small aliquots to prevent freeze-thaw cycles.
Precautions	NDUFB10 Antibody (Center) is for research use only and not for use in diagnostic or therapeutic procedures.

Protein Information

Name	NDUFB10
Function	Accessory subunit that is involved in the functional assembly of the mitochondrial respiratory chain complex I. Complex I has an NADH dehydrogenase activity with ubiquinone as an immediate electron acceptor

and mediates the transfer of electrons from NADH to the respiratory chain.

Cellular Location

Mitochondrion inner membrane; Peripheral membrane protein; Matrix side

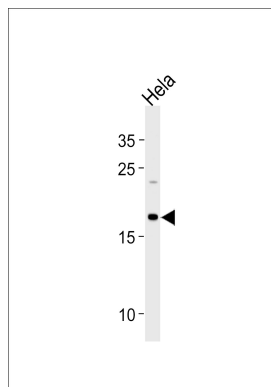
Background

Accessory subunit of the mitochondrial membrane respiratory chain NADH dehydrogenase (Complex I), that is believed not to be involved in catalysis. Complex I functions in the transfer of electrons from NADH to the respiratory chain. The immediate electron acceptor for the enzyme is believed to be ubiquinone.

References

Loeffen J.L.C.M., et al. Biochem. Biophys. Res. Commun. 253:415-422(1998).
Wang L., et al. Submitted (AUG-1998) to the EMBL/GenBank/DDBJ databases.
Zhang Q.-H., et al. Genome Res. 10:1546-1560(2000).
Murray J., et al. J. Biol. Chem. 278:13619-13622(2003).
Rikova K., et al. Cell 131:1190-1203(2007).

Images



NDUF10 Antibody (Center) (Cat. #AP20477c) western blot analysis in HeLa cell line lysates (35ug/lane). This demonstrates the NDUF10 antibody detected the NDUF10 protein (arrow).

Please note: All products are 'FOR RESEARCH USE ONLY. NOT FOR USE IN DIAGNOSTIC OR THERAPEUTIC PROCEDURES'.