

MATN2 Antibody (C-term)

Affinity Purified Rabbit Polyclonal Antibody (Pab)

Catalog # AP20481b

Product Information

Application	WB, IHC-P, E
Primary Accession	O00339
Reactivity	Human
Host	Rabbit
Clonality	Polyclonal
Isotype	Rabbit IgG
Calculated MW	106837
Antigen Region	732-760

Additional Information

Gene ID	4147
Other Names	Matrilin-2, MATN2
Target/Specificity	This MATN2 antibody is generated from rabbits immunized with a KLH conjugated synthetic peptide between 732-760 amino acids of human MATN2.
Dilution	WB~~1:1000 IHC-P~~1:100~500 E~~Use at an assay dependent concentration.
Format	Purified polyclonal antibody supplied in PBS with 0.09% (W/V) sodium azide. This antibody is purified through a protein A column, followed by peptide affinity purification.
Storage	Maintain refrigerated at 2-8°C for up to 2 weeks. For long term storage store at -20°C in small aliquots to prevent freeze-thaw cycles.
Precautions	MATN2 Antibody (C-term) is for research use only and not for use in diagnostic or therapeutic procedures.

Protein Information

Name	MATN2
Function	Involved in matrix assembly.
Cellular Location	Secreted.

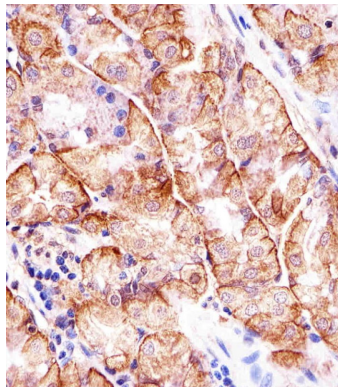
Background

Involved in matrix assembly (By similarity).

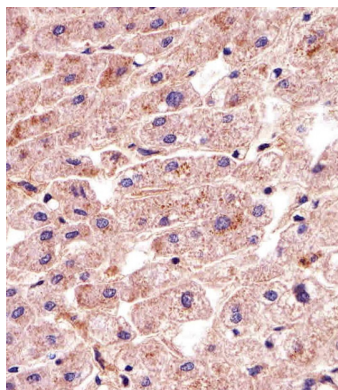
References

Deak F., et al. J. Biol. Chem. 272:9268-9274(1997).
Muratoglu S., et al. Cytogenet. Cell Genet. 90:323-327(2000).
Clark H.F., et al. Genome Res. 13:2265-2270(2003).
Ota T., et al. Nat. Genet. 36:40-45(2004).
Bechtel S., et al. BMC Genomics 8:399-399(2007).

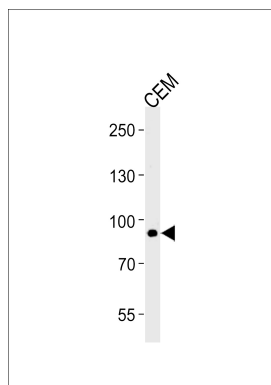
Images



Immunohistochemical analysis of paraffin-embedded H. stomach section using MATN2 Antibody (C-term)(Cat#AP20481B). AP20481B was diluted at 1:25 dilution. A undiluted biotinylated goat polyvalent antibody was used as the secondary, followed by DAB staining.



Immunohistochemical analysis of paraffin-embedded H. liver section using MATN2 Antibody (C-term)(Cat#AP20481B). AP20481B was diluted at 1:25 dilution. A undiluted biotinylated goat polyvalent antibody was used as the secondary, followed by DAB staining.



MATN2 Antibody (C-term) (Cat. #AP20481b) western blot analysis in CEM cell line lysates (35ug/lane). This demonstrates the MATN2 antibody detected the MATN2 protein (arrow).

Please note: All products are 'FOR RESEARCH USE ONLY. NOT FOR USE IN DIAGNOSTIC OR THERAPEUTIC PROCEDURES'.