

ASB9 Antibody (N-term)

Affinity Purified Rabbit Polyclonal Antibody (Pab)

Catalog # AP20482a

Product Information

Application	WB, E
Primary Accession	Q96DX5
Reactivity	Human
Host	Rabbit
Clonality	Polyclonal
Isotype	Rabbit IgG
Calculated MW	31858
Antigen Region	1-30

Additional Information

Gene ID	140462
Other Names	Ankyrin repeat and SOCS box protein 9, ASB-9, ASB9
Target/Specificity	This ASB9 antibody is generated from rabbits immunized with a KLH conjugated synthetic peptide between 1-30 amino acids from the N-terminal region of human ASB9.
Dilution	WB~~1:1000 E~~Use at an assay dependent concentration.
Format	Purified polyclonal antibody supplied in PBS with 0.09% (W/V) sodium azide. This antibody is purified through a protein A column, followed by peptide affinity purification.
Storage	Maintain refrigerated at 2-8°C for up to 2 weeks. For long term storage store at -20°C in small aliquots to prevent freeze-thaw cycles.
Precautions	ASB9 Antibody (N-term) is for research use only and not for use in diagnostic or therapeutic procedures.

Protein Information

Name	ASB9 {ECO:0000303 PubMed:20302626, ECO:0000312 HGNC:HGNC:17184}
Function	Substrate-recognition component of a cullin-5-RING E3 ubiquitin-protein ligase complex (ECS complex, also named CRL5 complex), which mediates the ubiquitination and subsequent proteasomal degradation of target proteins (PubMed: 25654263 , PubMed: 33268465). The ECS(ASB9) complex catalyzes ubiquitination of creatine kinases CKB and CKMT1A (PubMed: 20302626 , PubMed: 22418839 , PubMed: 25654263 , PubMed: 33268465).

Cellular Location

Mitochondrion.

Tissue Location

Predominantly expressed in testis, kidney, and liver.

Background

Substrate-recognition component of a SCF-like ECS (Elongin-Cullin-SOCS-box protein) E3 ubiquitin-protein ligase complex which mediates the ubiquitination and subsequent proteasomal degradation of target proteins. Recognizes at least two forms of creatine kinase, CKB and CKMT1A.

References

Fei X., et al. Protein J. 31:275-284(2012).

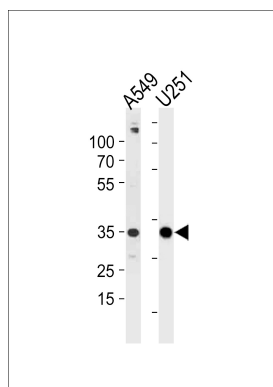
Mural R.J., et al. Submitted (JUL-2005) to the EMBL/GenBank/DDBJ databases.

Kwon S., et al. BMC Biol. 8:23-23(2010).

Ota T., et al. Nat. Genet. 36:40-45(2004).

Bechtel S., et al. BMC Genomics 8:399-399(2007).

Images



ASB9 Antibody (N-term) (Cat. #AP20482a) western blot analysis in A549,U251 cell line lysates (35ug/lane).This demonstrates the ASB9 antibody detected the ASB9 protein (arrow).

Please note: All products are 'FOR RESEARCH USE ONLY. NOT FOR USE IN DIAGNOSTIC OR THERAPEUTIC PROCEDURES'.