

SSNA1 Antibody (N-term)

Affinity Purified Rabbit Polyclonal Antibody (Pab)

Catalog # AP20483a

Product Information

Application	WB, IHC-P, E
Primary Accession	O43805
Other Accession	Q9J194 , Q5E9C3
Reactivity	Human, Mouse
Predicted	Bovine, Mouse
Host	Rabbit
Clonality	Polyclonal
Isotype	Rabbit IgG
Calculated MW	13596
Antigen Region	25-53

Additional Information

Gene ID	8636
Other Names	Sjogren syndrome nuclear autoantigen 1, Nuclear autoantigen of 14 kDa, SSNA1, NA14
Target/Specificity	This SSNA1 antibody is generated from rabbits immunized with a KLH conjugated synthetic peptide between 25-53 amino acids from the N-terminal region of human SSNA1.
Dilution	WB~~1:1000 IHC-P~~1:100~500 E~~Use at an assay dependent concentration.
Format	Purified polyclonal antibody supplied in PBS with 0.09% (W/V) sodium azide. This antibody is purified through a protein A column, followed by peptide affinity purification.
Storage	Maintain refrigerated at 2-8°C for up to 2 weeks. For long term storage store at -20°C in small aliquots to prevent freeze-thaw cycles.
Precautions	SSNA1 Antibody (N-term) is for research use only and not for use in diagnostic or therapeutic procedures.

Protein Information

Name	SSNA1 (HGNC:11321)
Function	Microtubule-binding protein which stabilizes dynamic microtubules by slowing growth and shrinkage at both plus and minus ends and serves as a sensor of microtubule damage, protecting microtubules from the

microtubule-severing enzyme SPAST (PubMed:[34970964](#)). Induces microtubule branching which is mediated by the formation of long SSNA1 fibrils which guide microtubule protofilaments to split apart from the mother microtubule and form daughter microtubules (By similarity). Plays a role in axon outgrowth and branching (PubMed:[25390646](#)). Required for cell division (PubMed:[25390646](#)).

Cellular Location

Nucleus. Cytoplasm, cytoskeleton, microtubule organizing center, centrosome. Cytoplasm, cytoskeleton, microtubule organizing center, centrosome, centriole Midbody. Cytoplasm, cytoskeleton, flagellum basal body. Cytoplasm, cytoskeleton, flagellum axoneme. Cell projection, axon {ECO:0000250|UniProtKB:Q9JJ94}. Note=In sperm, strongly expressed in the basal body region with weaker expression in the axoneme (PubMed:12640030). Localizes to axon branching points in neurons (By similarity). {ECO:0000250|UniProtKB:Q9JJ94, ECO:0000269|PubMed:12640030}

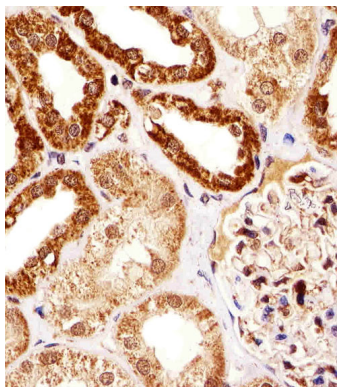
Tissue Location

Widely expressed..

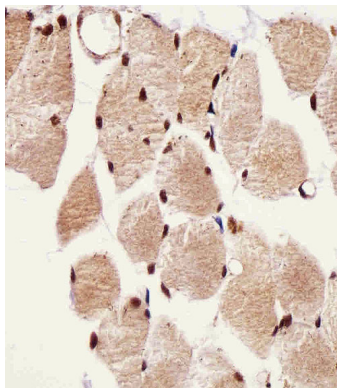
References

Ramos-Morales F., et al. J. Biol. Chem. 273:1634-1639(1998).
Kalnine N., et al. Submitted (MAY-2003) to the EMBL/GenBank/DDBJ databases.
Halleck A., et al. Submitted (JUN-2004) to the EMBL/GenBank/DDBJ databases.
Humphray S.J., et al. Nature 429:369-374(2004).
Mural R.J., et al. Submitted (JUL-2005) to the EMBL/GenBank/DDBJ databases.

Images

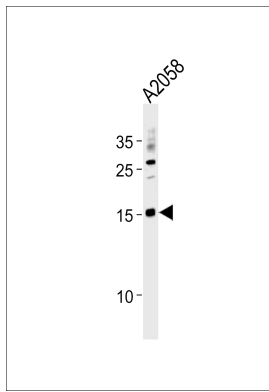


Immunohistochemical analysis of paraffin-embedded H. kidney section using SSNA1 Antibody (N-term)(Cat#AP20483A). AP20483A was diluted at 1:25 dilution. A undiluted biotinylated goat polyvalent antibody was used as the secondary, followed by DAB staining.



Immunohistochemical analysis of paraffin-embedded H. skeletal muscle section using SSNA1 Antibody (N-term)(Cat#AP20483A). AP20483A was diluted at 1:25 dilution. A undiluted biotinylated goat polyvalent antibody was used as the secondary, followed by DAB staining.

SSNA1 Antibody (N-term) (Cat. #AP20483a) western blot analysis in A2058 cell line lysates (35ug/lane).This



demonstrates the SSNA1 antibody detected the SSNA1 protein (arrow).

Please note: All products are 'FOR RESEARCH USE ONLY. NOT FOR USE IN DIAGNOSTIC OR THERAPEUTIC PROCEDURES'.