

RAB3C Antibody (Center)

Affinity Purified Rabbit Polyclonal Antibody (Pab)

Catalog # AP20486c

Product Information

Application	WB, E
Primary Accession	Q96E17
Other Accession	P10949
Reactivity	Human, Rat, Mouse
Predicted	Bovine
Host	Rabbit
Clonality	Polyclonal
Isotype	Rabbit IgG
Calculated MW	25952
Antigen Region	136-164

Additional Information

Gene ID	115827
Other Names	Ras-related protein Rab-3C, RAB3C
Target/Specificity	This RAB3C antibody is generated from rabbits immunized with a KLH conjugated synthetic peptide between 136-164 amino acids from the Central region of human RAB3C.
Dilution	WB~~1:1000 E~~Use at an assay dependent concentration.
Format	Purified polyclonal antibody supplied in PBS with 0.09% (W/V) sodium azide. This antibody is purified through a protein A column, followed by peptide affinity purification.
Storage	Maintain refrigerated at 2-8°C for up to 2 weeks. For long term storage store at -20°C in small aliquots to prevent freeze-thaw cycles.
Precautions	RAB3C Antibody (Center) is for research use only and not for use in diagnostic or therapeutic procedures.

Protein Information

Name	RAB3C (HGNC:30269)
Function	The small GTPases Rab are key regulators of intracellular membrane trafficking, from the formation of transport vesicles to their fusion with membranes. Rabs cycle between an inactive GDP-bound form and an active GTP-bound form that is able to recruit to membranes different sets of

downstream effectors directly responsible for vesicle formation, movement, tethering and fusion.

Cellular Location Cell membrane; Lipid-anchor; Cytoplasmic side

Tissue Location Expressed in brain, placenta and lung.

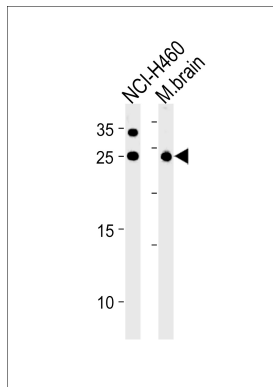
Background

Protein transport. Probably involved in vesicular traffic (By similarity).

References

Cheng H., et al. Biochem. Genet. 40:263-272(2002).

Images



RAB3C Antibody (Center) (Cat. #AP20486c) western blot analysis in NCI-H460 cell line and mouse brain tissue lysates (35ug/lane). This demonstrates the RAB3C antibody detected the RAB3C protein (arrow).

Please note: All products are 'FOR RESEARCH USE ONLY. NOT FOR USE IN DIAGNOSTIC OR THERAPEUTIC PROCEDURES'.