

# R Cbwd1 Antibody (C-term)

Affinity Purified Rabbit Polyclonal Antibody (Pab)

Catalog # AP20490b

## Product Information

---

<b>Application</b>	WB, E
<b>Primary Accession</b>	<a href="#">Q99MB4</a>
<b>Reactivity</b>	Rat, Mouse
<b>Host</b>	Rabbit
<b>Clonality</b>	Polyclonal
<b>Isotype</b>	Rabbit IgG
<b>Calculated MW</b>	43931
<b>Antigen Region</b>	325-351

## Additional Information

---

<b>Gene ID</b>	171057
<b>Other Names</b>	COBW domain-containing protein 1, Cobalamin synthase W domain-containing protein 1, Cbwd1
<b>Target/Specificity</b>	This Rat Cbwd1 antibody is generated from rabbits immunized with a KLH conjugated synthetic peptide between 325-351 amino acids from the C-terminal region of rat Cbwd1.
<b>Dilution</b>	WB~~1:1000 E~~Use at an assay dependent concentration.
<b>Format</b>	Purified polyclonal antibody supplied in PBS with 0.09% (W/V) sodium azide. This antibody is purified through a protein A column, followed by peptide affinity purification.
<b>Storage</b>	Maintain refrigerated at 2-8°C for up to 2 weeks. For long term storage store at -20°C in small aliquots to prevent freeze-thaw cycles.
<b>Precautions</b>	R Cbwd1 Antibody (C-term) is for research use only and not for use in diagnostic or therapeutic procedures.

## Protein Information

---

<b>Name</b>	Zng1
<b>Synonyms</b>	Cbwd1
<b>Function</b>	Zinc chaperone that directly transfers zinc cofactor to target metalloproteins, thereby activating them. Catalyzes zinc insertion into the active site of methionine aminopeptidase METAP1, which function to cleave

the initiator methionine from polypeptides during or after protein translation. Mechanistically, the N-terminal psi-PxLVp motif binds to the C6H2-type zinc finger of inactive form of METAP1. After formation of the docked complex, zinc is transferred from the CXCC motif in the GTPase domain of ZNG1 to the zinc binding site in the peptidase domain of METAP1 in a process requiring GTP hydrolysis. GTP/GDP exchange is required for release of active METAP1.

#### Cellular Location

Nucleus {ECO:0000250|UniProtKB:Q8VEH6}.

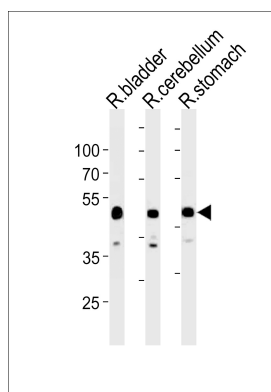
## References

---

Shi J., et al. Submitted (FEB-2001) to the EMBL/GenBank/DDBJ databases.

## Images

---



Rat Cbwd1 Antibody (C-term) (Cat. #AP20490b) western blot analysis in rat bladder, cerebellum and stomach tissue lysates (35ug/lane). This demonstrates the Rat Cbwd1 antibody detected the Rat Cbwd1 protein (arrow).

Please note: All products are 'FOR RESEARCH USE ONLY. NOT FOR USE IN DIAGNOSTIC OR THERAPEUTIC PROCEDURES'.