

# PKP4 Antibody (C-term)

Affinity Purified Rabbit Polyclonal Antibody (Pab)

Catalog # AP20495b

## Product Information

---

<b>Application</b>	WB, IHC-P, E
<b>Primary Accession</b>	<a href="#">Q99569</a>
<b>Reactivity</b>	Human, Mouse
<b>Host</b>	Rabbit
<b>Clonality</b>	Polyclonal
<b>Isotype</b>	Rabbit IgG
<b>Calculated MW</b>	131868
<b>Antigen Region</b>	1040-1068

## Additional Information

---

<b>Gene ID</b>	8502
<b>Other Names</b>	Plakophilin-4, p0071, PKP4
<b>Target/Specificity</b>	This PKP4 antibody is generated from rabbits immunized with a KLH conjugated synthetic peptide between 1040-1068 amino acids from the C-terminal region of human PKP4.
<b>Dilution</b>	WB~~1:1000 IHC-P~~1:100 E~~Use at an assay dependent concentration.
<b>Format</b>	Purified polyclonal antibody supplied in PBS with 0.09% (W/V) sodium azide. This antibody is purified through a protein A column, followed by peptide affinity purification.
<b>Storage</b>	Maintain refrigerated at 2-8°C for up to 2 weeks. For long term storage store at -20°C in small aliquots to prevent freeze-thaw cycles.
<b>Precautions</b>	PKP4 Antibody (C-term) is for research use only and not for use in diagnostic or therapeutic procedures.

## Protein Information

---

<b>Name</b>	PKP4
<b>Function</b>	Plays a role as a regulator of Rho activity during cytokinesis. May play a role in junctional plaques.
<b>Cellular Location</b>	Cell junction, desmosome. Cytoplasm, cytoskeleton, spindle. Midbody Cell membrane; Peripheral membrane protein. Note=Associated with the pericentrosomal region in interphase and with spindle poles during mitosis.

In anaphase, during chromosome segregation, is recruited to the central microtubule bundle, focussed at the spindle midzone and ultimately localizes to the midbody at cytokinesis. Constituent of the midbody cytoskeletal matrix. Colocalized with desmoplakin at desmosomal junctional plaques in cultured epithelial cells

#### Tissue Location

Expressed in salivary glands (at protein level) (PubMed:30479852). Expressed in arrector pili muscle (at protein level) (PubMed:29034528).

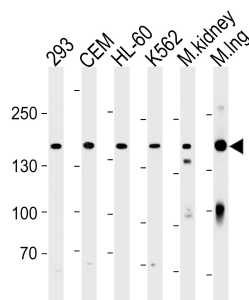
## Background

Plays a role as a regulator of Rho activity during cytokinesis. May play a role in junctional plaques.

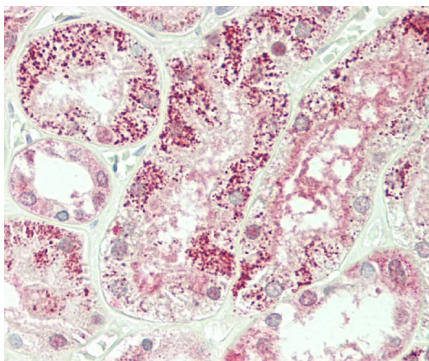
## References

Hatzfeld M., et al. J. Cell Sci. 109:2767-2778(1996).  
Hillier L.W., et al. Nature 434:724-731(2005).  
Salomon A.R., et al. Proc. Natl. Acad. Sci. U.S.A. 100:443-448(2003).  
Zhang Y., et al. Mol. Cell. Proteomics 4:1240-1250(2005).  
Tao W.A., et al. Nat. Methods 2:591-598(2005).

## Images



PKP4 Antibody (C-term) (Cat. #AP20495b) western blot analysis in 293,CEM,HL-60,K562 cell line and mouse kidney,lung tissue lysates (35ug/lane).This demonstrates the PKP4 antibody detected the PKP4 protein (arrow).



Formalin-fixed and paraffin-embedded H.kidney tissue reacted with PKP4 Antibody (C-term) (Cat#AP20495b).

Please note: All products are 'FOR RESEARCH USE ONLY. NOT FOR USE IN DIAGNOSTIC OR THERAPEUTIC PROCEDURES'.