

SSPN Antibody (N-term)

Affinity Purified Rabbit Polyclonal Antibody (Pab)

Catalog # AP20496a

Product Information

Application	WB, IHC-P, E
Primary Accession	Q14714
Reactivity	Human
Host	Rabbit
Clonality	Polyclonal
Isotype	Rabbit IgG
Calculated MW	26618
Antigen Region	6-34

Additional Information

Gene ID	8082
Other Names	Sarcospan, K-ras oncogene-associated protein, Kirsten-ras-associated protein, SSPN, KRAG
Target/Specificity	This SSPN antibody is generated from rabbits immunized with a KLH conjugated synthetic peptide between 6-34 amino acids from the N-terminal region of human SSPN.
Dilution	WB~~1:1000 IHC-P~~1:100~500 E~~Use at an assay dependent concentration.
Format	Purified polyclonal antibody supplied in PBS with 0.09% (W/V) sodium azide. This antibody is purified through a protein A column, followed by peptide affinity purification.
Storage	Maintain refrigerated at 2-8°C for up to 2 weeks. For long term storage store at -20°C in small aliquots to prevent freeze-thaw cycles.
Precautions	SSPN Antibody (N-term) is for research use only and not for use in diagnostic or therapeutic procedures.

Protein Information

Name	SSPN
Synonyms	KRAG
Function	Component of the dystrophin-glycoprotein complex (DGC), a complex that spans the muscle plasma membrane and forms a link between the F-actin cytoskeleton and the extracellular matrix. Preferentially associates with the

sarcoglycan subcomplex of the DGC.

Cellular Location

Cell membrane; Multi-pass membrane protein. Cell membrane, sarcolemma
Postsynaptic cell membrane; Multi-pass membrane protein. Note=Also found in myotendinous junctions and in the postsynaptic membrane of neuromuscular junctions.

Tissue Location

Isoform 1 is expressed exclusively in heart and skeletal muscle. Isoform 2 is expressed in heart, skeletal muscle, thymus, prostate, testis, ovary, small intestine, colon and spleen

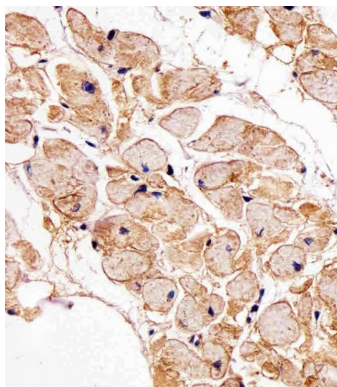
Background

Component of the dystrophin-glycoprotein complex (DGC), a complex that spans the muscle plasma membrane and forms a link between the F-actin cytoskeleton and the extracellular matrix. Preferentially associates with the sarcoglycan subcomplex of the DGC.

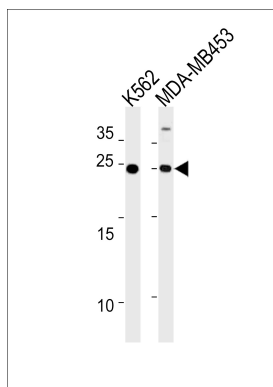
References

Crosbie R.H., et al. J. Biol. Chem. 272:31221-31224(1997).
Crosbie R.H., et al. Submitted (APR-2000) to the EMBL/GenBank/DDBJ databases.
Wiemann S., et al. Genome Res. 11:422-435(2001).
Heighway J., et al. Genomics 35:207-214(1996).

Images



Immunohistochemical analysis of paraffin-embedded H. heart section using SSPN Antibody (N-term)(Cat#AP20496A). AP20496A was diluted at 1:25 dilution. A undiluted biotinylated goat polyvalent antibody was used as the secondary, followed by DAB staining.



SSPN Antibody (N-term) (Cat. #AP20496a) western blot analysis in K562,MDA-MB453 cell line lysates (35ug/lane).This demonstrates the SSPN antibody detected the SSPN protein (arrow).

Please note: All products are 'FOR RESEARCH USE ONLY. NOT FOR USE IN DIAGNOSTIC OR THERAPEUTIC PROCEDURES'.