

SGCG Antibody (Center)

Affinity Purified Rabbit Polyclonal Antibody (Pab)

Catalog # AP20498c

Product Information

Application	WB, IHC-P, E
Primary Accession	Q13326
Other Accession	Q0VCU7
Reactivity	Human, Mouse
Predicted	Bovine
Host	Rabbit
Clonality	Polyclonal
Isotype	Rabbit IgG
Calculated MW	32379
Antigen Region	145-172

Additional Information

Gene ID	6445
Other Names	Gamma-sarcoglycan, Gamma-SG, 35 kDa dystrophin-associated glycoprotein, 35DAG, SGCG
Target/Specificity	This SGCG antibody is generated from rabbits immunized with a KLH conjugated synthetic peptide between 145-172 amino acids from the Central region of human SGCG.
Dilution	WB~~1:1000 IHC-P~~1:100~500 E~~Use at an assay dependent concentration.
Format	Purified polyclonal antibody supplied in PBS with 0.09% (W/V) sodium azide. This antibody is purified through a protein A column, followed by peptide affinity purification.
Storage	Maintain refrigerated at 2-8°C for up to 2 weeks. For long term storage store at -20°C in small aliquots to prevent freeze-thaw cycles.
Precautions	SGCG Antibody (Center) is for research use only and not for use in diagnostic or therapeutic procedures.

Protein Information

Name	SGCG
Function	Component of the sarcoglycan complex, a subcomplex of the dystrophin-glycoprotein complex which forms a link between the F-actin cytoskeleton and the extracellular matrix.

Cellular Location Cell membrane, sarcolemma; Single-pass type II membrane protein. Cytoplasm, cytoskeleton

Tissue Location Expressed in skeletal and heart muscle.

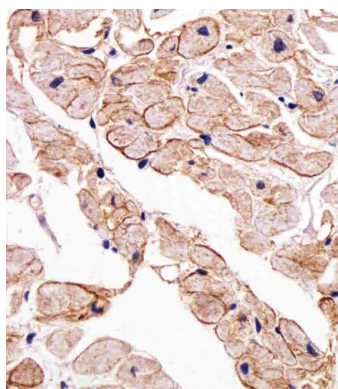
Background

Component of the sarcoglycan complex, a subcomplex of the dystrophin-glycoprotein complex which forms a link between the F-actin cytoskeleton and the extracellular matrix.

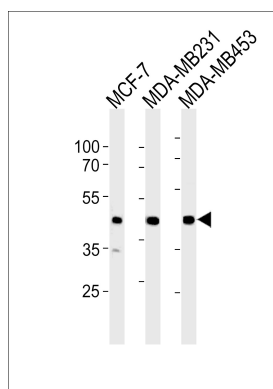
References

Noguchi S., et al. Science 270:819-822(1995).
McNally E.M., et al. Am. J. Hum. Genet. 59:1040-1047(1996).
Dunham A., et al. Nature 428:522-528(2004).
Thompson T.G., et al. J. Cell Biol. 148:115-126(2000).
Piccolo F., et al. Hum. Mol. Genet. 5:2019-2022(1996).

Images



Immunohistochemical analysis of paraffin-embedded H. heart section using SGCG Antibody (Center)(Cat#AP20498C). AP20498C was diluted at 1:25 dilution. A undiluted biotinylated goat polyvalent antibody was used as the secondary, followed by DAB staining.



SGCG Antibody (Center) (Cat. #AP20498c) western blot analysis in MCF-7,MDA-MB231,MDA-MB453 cell line lysates (35ug/lane).This demonstrates the SGCG antibody detected the SGCG protein (arrow).

Please note: All products are 'FOR RESEARCH USE ONLY. NOT FOR USE IN DIAGNOSTIC OR THERAPEUTIC PROCEDURES'.