

# BCAP31 Antibody (Center)

Affinity Purified Rabbit Polyclonal Antibody (Pab)

Catalog # AP20499c

## Product Information

---

Application	WB, IHC-P, E
Primary Accession	<a href="#">P51572</a>
Reactivity	Human
Host	Rabbit
Clonality	Polyclonal
Isotype	Rabbit IgG
Calculated MW	27992
Antigen Region	120-147

## Additional Information

---

Gene ID	10134
Other Names	B-cell receptor-associated protein 31, BCR-associated protein 31, Bap31, 6C6-AG tumor-associated antigen, Protein CDM, p28, BCAP31, BAP31, DXS1357E
Target/Specificity	This BCAP31 antibody is generated from rabbits immunized with a KLH conjugated synthetic peptide between 120-147 amino acids from the Central region of human BCAP31.
Dilution	WB~~1:1000 IHC-P~~1:100~500 E~~Use at an assay dependent concentration.
Format	Purified polyclonal antibody supplied in PBS with 0.09% (W/V) sodium azide. This antibody is purified through a protein A column, followed by peptide affinity purification.
Storage	Maintain refrigerated at 2-8°C for up to 2 weeks. For long term storage store at -20°C in small aliquots to prevent freeze-thaw cycles.
Precautions	BCAP31 Antibody (Center) is for research use only and not for use in diagnostic or therapeutic procedures.

## Protein Information

---

Name	BCAP31 ( <a href="#">HGNC:16695</a> )
Function	Functions as a chaperone protein (PubMed: <a href="#">18287538</a> , PubMed: <a href="#">9396746</a> ). Is one of the most abundant endoplasmic reticulum (ER) proteins (PubMed: <a href="#">18287538</a> , PubMed: <a href="#">9396746</a> ). Plays a role in the export of secreted proteins in the ER, the recognition of abnormally folded protein and their

targeting to the ER associated-degradation (ERAD) (PubMed:[18287538](#), PubMed:[9396746](#)). Also serves as a cargo receptor for the export of transmembrane proteins (By similarity). Plays a role in the assembly of the mitochondrial membrane respiratory chain NADH dehydrogenase (Complex I) by stimulating the translocation of NDUF54 and NDUFB11 from the cytosol to the mitochondria via interaction with TOMM40 (PubMed:[31206022](#)). In response to ER stress, delocalizes from the ER-mitochondria contact sites and binds BCL2 (PubMed:[31206022](#)). May be involved in CASP8-mediated apoptosis (PubMed:[10958671](#)).

#### Cellular Location

Endoplasmic reticulum membrane; Multi-pass membrane protein  
Endoplasmic reticulum-Golgi intermediate compartment membrane;  
Multi-pass membrane protein. Note=May shuttle between the ER and the intermediate compartment/cis-Golgi complex (PubMed:9396746). Associates with the mitochondria-associated endoplasmic reticulum membrane via interaction with TOMM40 (PubMed:31206022)

#### Tissue Location

Ubiquitous. Highly expressed in neurons and discrete endocrine cells.

## Background

---

May play a role in anterograde transport of membrane proteins from the endoplasmic reticulum to the Golgi. May be involved in CASP8-mediated apoptosis.

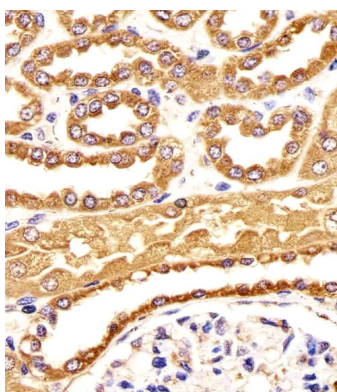
## References

---

Mosser J., et al. Genomics 22:469-471(1994).  
Li E., et al. Eur. J. Biochem. 238:631-638(1996).  
Adachi T., et al. EMBO J. 15:1534-1541(1996).  
Ota T., et al. Nat. Genet. 36:40-45(2004).  
Ross M.T., et al. Nature 434:325-337(2005).

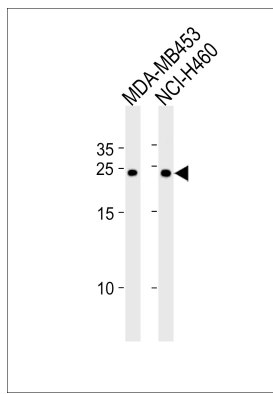
## Images

---



Immunohistochemical analysis of paraffin-embedded H. kideny section using BCAP31 Antibody (Center)(Cat#AP20499C). AP20499C was diluted at 1:25 dilution. A undiluted biotinylated goat polyvalent antibody was used as the secondary, followed by DAB staining.

BCAP31 Antibody (Center) (Cat. #AP20499c) western blot analysis in MDA-MB453,NCI-H460 cell line lysates (35ug/lane).This demonstrates the BCAP31 antibody detected the BCAP31 protein (arrow).



Please note: All products are 'FOR RESEARCH USE ONLY. NOT FOR USE IN DIAGNOSTIC OR THERAPEUTIC PROCEDURES'.