

# C13orf30 Antibody (C-term)

Affinity Purified Rabbit Polyclonal Antibody (Pab)

Catalog # AP20501b

## Product Information

---

Application	WB, E
Primary Accession	<a href="#">Q8N7L0</a>
Reactivity	Human
Host	Rabbit
Clonality	Polyclonal
Isotype	Rabbit IgG
Calculated MW	16362
Antigen Region	111-139

## Additional Information

---

Gene ID	144809
Other Names	Protein FAM216B, FAM216B, C13orf30
Target/Specificity	This C13orf30 antibody is generated from rabbits immunized with a KLH conjugated synthetic peptide between 111-139 amino acids from the C-terminal region of human C13orf30.
Dilution	WB~~1:1000 E~~Use at an assay dependent concentration.
Format	Purified polyclonal antibody supplied in PBS with 0.09% (W/V) sodium azide. This antibody is purified through a protein A column, followed by peptide affinity purification.
Storage	Maintain refrigerated at 2-8°C for up to 2 weeks. For long term storage store at -20°C in small aliquots to prevent freeze-thaw cycles.
Precautions	C13orf30 Antibody (C-term) is for research use only and not for use in diagnostic or therapeutic procedures.

## Protein Information

---

Name	FAM216B
Synonyms	C13orf30

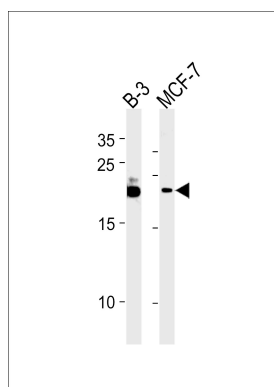
## References

---

Ota T., et al. Nat. Genet. 36:40-45(2004).  
Dunham A., et al. Nature 428:522-528(2004).  
Mural R.J., et al. Submitted (JUL-2005) to the EMBL/GenBank/DDBJ databases.

## Images

---



C13orf30 Antibody (C-term) (Cat. #AP20501b) western blot analysis in B-3,MCF-7 cell line lysates (35ug/lane).This demonstrates the C13orf30 antibody detected the C13orf30 protein (arrow).

Please note: All products are 'FOR RESEARCH USE ONLY. NOT FOR USE IN DIAGNOSTIC OR THERAPEUTIC PROCEDURES'.