

M Abi3 Antibody (C-term)

Affinity Purified Rabbit Polyclonal Antibody (Pab)

Catalog # AP20504b

Product Information

Application	WB, E
Primary Accession	Q8BYZ1
Reactivity	Mouse
Host	Rabbit
Clonality	Polyclonal
Isotype	Rabbit IgG
Calculated MW	39107

Additional Information

Gene ID	66610
Other Names	ABI gene family member 3, New molecule including SH3, Nesh, Abi3, Nesh
Target/Specificity	This Mouse Abi3 antibody is generated from rabbits immunized with a KLH conjugated synthetic peptide between 300-329 amino acids from the C-terminal region of mouse Abi3.
Dilution	WB~~1:1000 E~~Use at an assay dependent concentration.
Format	Purified polyclonal antibody supplied in PBS with 0.05% (V/V) Proclin 300. This antibody is purified through a protein A column, followed by peptide affinity purification.
Storage	Maintain refrigerated at 2-8°C for up to 2 weeks. For long term storage store at -20°C in small aliquots to prevent freeze-thaw cycles.
Precautions	M Abi3 Antibody (C-term) is for research use only and not for use in diagnostic or therapeutic procedures.

Protein Information

Name	Abi3
Synonyms	Nesh
Function	Inhibits ectopic tumor cell metastasis of SRD cells. In vitro, reduces cell motility.
Cellular Location	Cytoplasm.

Background

Inhibits ectopic tumor cell metastasis of SRD cells. In vitro, reduces cell motility.

References

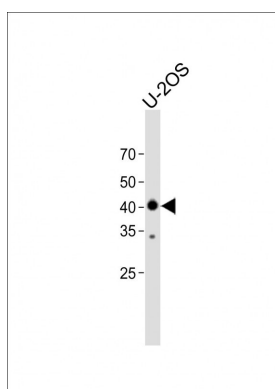
Carninci P., et al. Science 309:1559-1563(2005).

Church D.M., et al. PLoS Biol. 7:E1000112-E1000112(2009).

Mural R.J., et al. Submitted (JUL-2005) to the EMBL/GenBank/DBJ databases.

Ichigotani Y., et al. Cancer Res. 62:2215-2219(2002).

Images



All lanes: Anti-M Abi3 Antibody (C-term) at 1:2000 dilution + U-2OS whole cell lysate Lysates/proteins at 20 µg per lane. Secondary: Goat Anti-Rabbit IgG, (H+L), Peroxidase conjugated (ASP1615) at 1/15000 dilution. Observed band size: 39 KDa Blocking/Dilution buffer: 5% NFDm/TBST.

Please note: All products are 'FOR RESEARCH USE ONLY. NOT FOR USE IN DIAGNOSTIC OR THERAPEUTIC PROCEDURES'.