

NPIPL2 Antibody (C-term)

Affinity Purified Rabbit Polyclonal Antibody (Pab)
Catalog # AP20510b

Product Information

Application	WB, E
Primary Accession	A6NHN6
Reactivity	Human
Host	Rabbit
Clonality	Polyclonal
Isotype	Rabbit IgG
Calculated MW	51267
Antigen Region	300-327

Additional Information

Gene ID	440348
Other Names	Nuclear pore complex-interacting protein family member B15, Nuclear pore complex-interacting protein-like 2, NPIP B15, NPIPL2
Target/Specificity	This NPIPL2 antibody is generated from rabbits immunized with a KLH conjugated synthetic peptide between 300-327 amino acids from the C-terminal region of human NPIPL2.
Dilution	WB~~1:1000 E~~Use at an assay dependent concentration.
Format	Purified polyclonal antibody supplied in PBS with 0.09% (W/V) sodium azide. This antibody is purified through a protein A column, followed by peptide affinity purification.
Storage	Maintain refrigerated at 2-8°C for up to 2 weeks. For long term storage store at -20°C in small aliquots to prevent freeze-thaw cycles.
Precautions	NPIPL2 Antibody (C-term) is for research use only and not for use in diagnostic or therapeutic procedures.

Protein Information

Name	NPIP B15
Synonyms	NPIPL2
Cellular Location	Secreted.

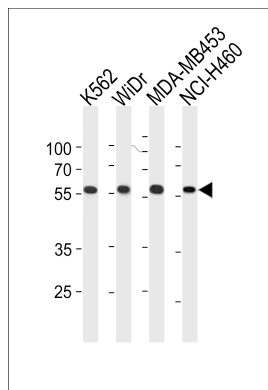
Background

The function of this protein is unknown.

References

Martin J., et al. Nature 432:988-994(2004).

Images



NPIPL2 Antibody (C-term) (Cat. #AP20510b) western blot analysis in K562,WiDr,MDA-MB453,NCI-H460 cell line lysates (35ug/lane).This demonstrates the NPIPL2 antibody detected the NPIPL2 protein (arrow).

Please note: All products are 'FOR RESEARCH USE ONLY. NOT FOR USE IN DIAGNOSTIC OR THERAPEUTIC PROCEDURES'.