

M Sh2d5 Antibody (Center)

Affinity Purified Rabbit Polyclonal Antibody (Pab)

Catalog # AP20512c

Product Information

Application	WB, E
Primary Accession	Q8JZW5
Reactivity	Mouse
Host	Rabbit
Clonality	Polyclonal
Isotype	Rabbit IgG
Calculated MW	47380
Antigen Region	200-230

Additional Information

Gene ID	230863
Other Names	SH2 domain-containing protein 5, Sh2d5
Target/Specificity	This Mouse Sh2d5 antibody is generated from rabbits immunized with a KLH conjugated synthetic peptide between 200-230 amino acids from the Central region of mouse Sh2d5.
Dilution	WB~~1:1000 E~~Use at an assay dependent concentration.
Format	Purified polyclonal antibody supplied in PBS with 0.09% (W/V) sodium azide. This antibody is purified through a protein A column, followed by peptide affinity purification.
Storage	Maintain refrigerated at 2-8°C for up to 2 weeks. For long term storage store at -20°C in small aliquots to prevent freeze-thaw cycles.
Precautions	M Sh2d5 Antibody (Center) is for research use only and not for use in diagnostic or therapeutic procedures.

Protein Information

Name	Sh2d5 {ECO:0000312 MGI:MGI:2446215}
Function	May be involved in synaptic plasticity regulation through the control of Rac-GTP levels.
Cellular Location	Postsynaptic density
Tissue Location	Highly expressed in brain, particularly in Purkinje cells in the cerebellum and

the cornu ammonis of the hippocampus.

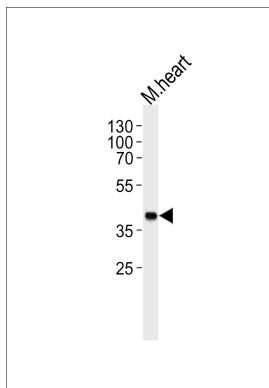
Background

The function of this protein is unknown.

References

Trinidad J.C., et al. Mol. Cell. Proteomics 5:914-922(2006).
Munton R.P., et al. Mol. Cell. Proteomics 6:283-293(2007).

Images



Mouse Sh2d5 Antibody (Center) (Cat. #AP20512c) western blot analysis in mouse heart tissue lysates (35ug/lane). This demonstrates the mouse Sh2d5 antibody detected the mouse Sh2d5 protein (arrow).

Please note: All products are 'FOR RESEARCH USE ONLY. NOT FOR USE IN DIAGNOSTIC OR THERAPEUTIC PROCEDURES'.