

R Ccdc89 Antibody (Center)

Affinity Purified Rabbit Polyclonal Antibody (Pab)

Catalog # AP20514c

Product Information

Application	WB, E
Primary Accession	B2RZ86
Reactivity	Human, Rat, Mouse
Host	Rabbit
Clonality	Polyclonal
Isotype	Rabbit IgG
Calculated MW	43453
Antigen Region	114-145

Additional Information

Gene ID	293107
Other Names	Coiled-coil domain-containing protein 89 {ECO:0000312 RGD:1305335}, Bc8 orange-interacting protein, Ccdc89 {ECO:0000312 EMBL:AAI670631, ECO:0000312 RGD:1305335}
Target/Specificity	This Rat Ccdc89 antibody is generated from rabbits immunized with a KLH conjugated synthetic peptide between 114-145 amino acids from the Central region of rat Ccdc89.
Dilution	WB~~1:1000 E~~Use at an assay dependent concentration.
Format	Purified polyclonal antibody supplied in PBS with 0.09% (W/V) sodium azide. This antibody is purified through a protein A column, followed by peptide affinity purification.
Storage	Maintain refrigerated at 2-8°C for up to 2 weeks. For long term storage store at -20°C in small aliquots to prevent freeze-thaw cycles.
Precautions	R Ccdc89 Antibody (Center) is for research use only and not for use in diagnostic or therapeutic procedures.

Protein Information

Name	Ccdc89 {ECO:0000312 EMBL:AAI67063.1, ECO:0000312 RGD:1305335}
Cellular Location	Cytoplasm {ECO:0000250 UniProtKB:Q7ZW57}. Nucleus {ECO:0000250 UniProtKB:Q7ZW57}. Note=Uniformly distributed within the cell, but becomes recruited to the nucleus upon binding to HEY1 {ECO:0000250 UniProtKB:Q7ZW57}

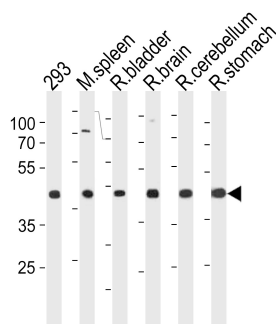
Background

The function of this protein is unknown.

References

Van Wayenbergh R., et al. Dev. Dyn. 228:716-725(2003).

Images



Rat Ccdc89 Antibody (Center) (Cat. #AP20514c) western blot analysis in 293 cell line,mouse spleen,rat bladder,brain,cerebellum and stomach tissue lysates (35ug/lane).This demonstrates the rat Ccdc89 antibody detected the rat Ccdc89 protein (arrow).

Please note: All products are 'FOR RESEARCH USE ONLY. NOT FOR USE IN DIAGNOSTIC OR THERAPEUTIC PROCEDURES'.