

# OR51E1 Antibody (C-term)

Affinity Purified Rabbit Polyclonal Antibody (Pab)

Catalog # AP20521b

## Product Information

---

Application	WB, E
Primary Accession	<a href="#">Q8TCB6</a>
Reactivity	Human
Host	Rabbit
Clonality	Polyclonal
Isotype	Rabbit IgG
Calculated MW	35402
Antigen Region	280-309

## Additional Information

---

Gene ID	143503
Other Names	Olfactory receptor 51E1, D-GPCR, G-protein coupled receptor 164, Olfactory receptor 52A3, Prostate-overexpressed G protein-coupled receptor, Prostate-specific G protein-coupled receptor 2, OR51E1, GPR164, OR51E1P, OR52A3P, POGR, PSGR2
Target/Specificity	This OR51E1 antibody is generated from rabbits immunized with a KLH conjugated synthetic peptide between 280-309 amino acids from the C-terminal region of human OR51E1.
Dilution	WB~~1:1000 E~~Use at an assay dependent concentration.
Format	Purified polyclonal antibody supplied in PBS with 0.09% (W/V) sodium azide. This antibody is purified through a protein A column, followed by peptide affinity purification.
Storage	Maintain refrigerated at 2-8°C for up to 2 weeks. For long term storage store at -20°C in small aliquots to prevent freeze-thaw cycles.
Precautions	OR51E1 Antibody (C-term) is for research use only and not for use in diagnostic or therapeutic procedures.

## Protein Information

---

Name	OR51E1
Synonyms	GPR164, OR51E1P, OR52A3P, POGR, PSGR2
Function	Odorant receptor.

**Cellular Location**

Cell membrane; Multi-pass membrane protein

**Tissue Location**

Highly expressed in prostate. Very low levels may be detected in some other tissues, such as placenta, skeletal muscle, heart, ovary and testis.  
Up-regulated in prostate cancers

## Background

---

Odorant receptor (Potential).

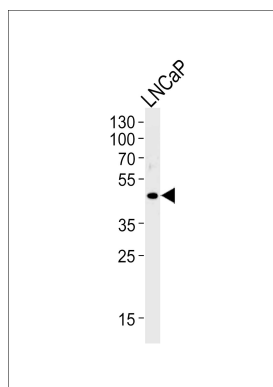
## References

---

Weigle B., et al. Biochem. Biophys. Res. Commun. 322:239-249(2004).  
Suwa M., et al. Submitted (JUL-2001) to the EMBL/GenBank/DDBJ databases.  
Weng J., et al. Int. J. Cancer 118:1471-1480(2006).  
Ota T., et al. Nat. Genet. 36:40-45(2004).  
Mural R.J., et al. Submitted (SEP-2005) to the EMBL/GenBank/DDBJ databases.

## Images

---



OR51E1 Antibody (C-term) (Cat. #AP20521b) western blot analysis in LNCaP cell line lysates (35ug/lane). This demonstrates the OR51E1 antibody detected the OR51E1 protein (arrow).

Please note: All products are 'FOR RESEARCH USE ONLY. NOT FOR USE IN DIAGNOSTIC OR THERAPEUTIC PROCEDURES'.