

OR1L3 Antibody (C-term)

Affinity Purified Rabbit Polyclonal Antibody (Pab)

Catalog # AP20522b

Product Information

Application	WB, E
Primary Accession	Q8NH93
Reactivity	Human
Host	Rabbit
Clonality	Polyclonal
Isotype	Rabbit IgG
Calculated MW	36633
Antigen Region	290-320

Additional Information

Gene ID	26735
Other Names	Olfactory receptor 1L3, Olfactory receptor 9-D, OR9-D, Olfactory receptor OR9-28, OR1L3
Target/Specificity	This OR1L3 antibody is generated from rabbits immunized with a KLH conjugated synthetic peptide between 290-320 amino acids from the C-terminal region of human OR1L3.
Dilution	WB~~1:1000 E~~Use at an assay dependent concentration.
Format	Purified polyclonal antibody supplied in PBS with 0.09% (W/V) sodium azide. This antibody is purified through a protein A column, followed by peptide affinity purification.
Storage	Maintain refrigerated at 2-8°C for up to 2 weeks. For long term storage store at -20°C in small aliquots to prevent freeze-thaw cycles.
Precautions	OR1L3 Antibody (C-term) is for research use only and not for use in diagnostic or therapeutic procedures.

Protein Information

Name	OR1L3
Function	Odorant receptor.
Cellular Location	Cell membrane; Multi-pass membrane protein.

Background

Odorant receptor (Potential).

References

Suwa M., et al. Submitted (JUL-2001) to the EMBL/GenBank/DDBJ databases.

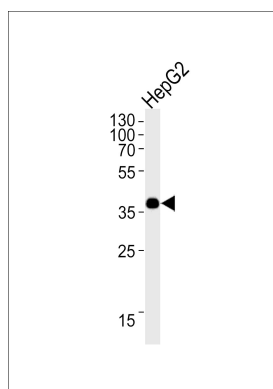
Humphray S.J., et al. Nature 429:369-374(2004).

Mural R.J., et al. Submitted (JUL-2005) to the EMBL/GenBank/DDBJ databases.

Malnic B., et al. Proc. Natl. Acad. Sci. U.S.A. 101:2584-2589(2004).

Malnic B., et al. Proc. Natl. Acad. Sci. U.S.A. 101:7205-7205(2004).

Images



OR1L3 Antibody (C-term) (Cat. #AP20522b) western blot analysis in HepG2 cell line lysates (35ug/lane). This demonstrates the OR1L3 antibody detected the OR1L3 protein (arrow).

Please note: All products are 'FOR RESEARCH USE ONLY. NOT FOR USE IN DIAGNOSTIC OR THERAPEUTIC PROCEDURES'.