

# APOA2 Antibody (Center)

Affinity Purified Rabbit Polyclonal Antibody (Pab)

Catalog # AP20525c

## Product Information

---

<b>Application</b>	WB, E
<b>Primary Accession</b>	<a href="#">P02652</a>
<b>Reactivity</b>	Human, Rat, Mouse
<b>Host</b>	Rabbit
<b>Clonality</b>	Polyclonal
<b>Isotype</b>	Rabbit IgG
<b>Calculated MW</b>	11175
<b>Antigen Region</b>	23-56

## Additional Information

---

<b>Gene ID</b>	336
<b>Other Names</b>	Apolipoprotein A-II, Apo-AII, ApoA-II, Apolipoprotein A2, Proapolipoprotein A-II, ProapoA-II, Truncated apolipoprotein A-II, Apolipoprotein A-II(1-76), APOA2
<b>Target/Specificity</b>	This APOA2 antibody is generated from rabbits immunized with a KLH conjugated synthetic peptide between 23-56 amino acids from the Central region of human APOA2.
<b>Dilution</b>	WB~~1:1000 E~~Use at an assay dependent concentration.
<b>Format</b>	Purified polyclonal antibody supplied in PBS with 0.09% (W/V) sodium azide. This antibody is purified through a protein A column, followed by peptide affinity purification.
<b>Storage</b>	Maintain refrigerated at 2-8°C for up to 2 weeks. For long term storage store at -20°C in small aliquots to prevent freeze-thaw cycles.
<b>Precautions</b>	APOA2 Antibody (Center) is for research use only and not for use in diagnostic or therapeutic procedures.

## Protein Information

---

<b>Name</b>	APOA2
<b>Function</b>	May stabilize HDL (high density lipoprotein) structure by its association with lipids, and affect the HDL metabolism.
<b>Cellular Location</b>	Secreted.

**Tissue Location**

Plasma; synthesized in the liver and intestine.

**Background**

---

May stabilize HDL (high density lipoprotein) structure by its association with lipids, and affect the HDL metabolism.

**References**

---

Knott T.J., et al. Biochem. Biophys. Res. Commun. 120:734-740(1984).

Moore M.N., et al. Biochem. Biophys. Res. Commun. 123:1-7(1984).

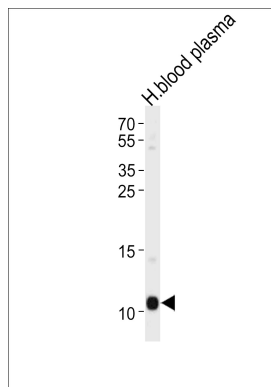
Sharpe C.R., et al. Nucleic Acids Res. 12:3917-3932(1984).

Lackner K.J., et al. Nucleic Acids Res. 13:4597-4608(1985).

Knott T.J., et al. Nucleic Acids Res. 13:6387-6398(1985).

**Images**

---



APOA2 Antibody (Center) (Cat. #AP20525c) western blot analysis in human blood plasma tissue lysates (35ug/lane). This demonstrates the APOA2 antibody detected the APOA2 protein (arrow).

Please note: All products are 'FOR RESEARCH USE ONLY. NOT FOR USE IN DIAGNOSTIC OR THERAPEUTIC PROCEDURES'.