

# STX1B Antibody (N-term)

Affinity Purified Rabbit Polyclonal Antibody (Pab)

Catalog # AP20532a

## Product Information

---

<b>Application</b>	WB, E
<b>Primary Accession</b>	<a href="#">P61266</a>
<b>Reactivity</b>	Rat, Human
<b>Host</b>	Rabbit
<b>Clonality</b>	Polyclonal
<b>Isotype</b>	Rabbit IgG
<b>Calculated MW</b>	33245
<b>Antigen Region</b>	1-30

## Additional Information

---

<b>Gene ID</b>	112755
<b>Other Names</b>	Syntaxin-1B, Syntaxin-1B1, Syntaxin-1B2, STX1B, STX1B1, STX1B2
<b>Target/Specificity</b>	This STX1B antibody is generated from rabbits immunized with a KLH conjugated synthetic peptide between 1-30 amino acids from the N-terminal region of human STX1B.
<b>Dilution</b>	WB~~1:1000 E~~Use at an assay dependent concentration.
<b>Format</b>	Purified polyclonal antibody supplied in PBS with 0.09% (W/V) sodium azide. This antibody is purified through a protein A column, followed by peptide affinity purification.
<b>Storage</b>	Maintain refrigerated at 2-8°C for up to 2 weeks. For long term storage store at -20°C in small aliquots to prevent freeze-thaw cycles.
<b>Precautions</b>	STX1B Antibody (N-term) is for research use only and not for use in diagnostic or therapeutic procedures.

## Protein Information

---

<b>Name</b>	STX1B
<b>Synonyms</b>	STX1B1, STX1B2
<b>Function</b>	Potentially involved in docking of synaptic vesicles at presynaptic active zones. May mediate Ca(2+)-regulation of exocytosis acrosomal reaction in sperm (By similarity).

## Background

---

Potentially involved in docking of synaptic vesicles at presynaptic active zones. May mediate Ca(2+)-regulation of exocytosis acrosomal reaction in sperm (By similarity).

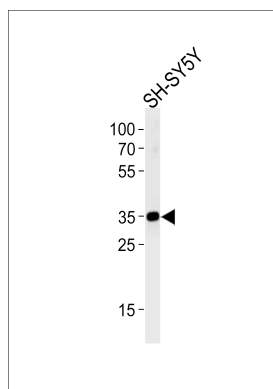
## References

---

Fujiwara T., et al. Submitted (AUG-1994) to the EMBL/GenBank/DDBJ databases.  
Gastaldi M., et al. Submitted (MAR-2001) to the EMBL/GenBank/DDBJ databases.

## Images

---



STX1B Antibody (N-term) (Cat. #AP20532a) western blot analysis in SH-SY5Y cell line lysates (35ug/lane). This demonstrates the STX1B antibody detected the STX1B protein (arrow).

Please note: All products are 'FOR RESEARCH USE ONLY. NOT FOR USE IN DIAGNOSTIC OR THERAPEUTIC PROCEDURES'.