

# KRT20 Antibody (C-term)

Affinity Purified Rabbit Polyclonal Antibody (Pab)

Catalog # AP20533b

## Product Information

---

<b>Application</b>	WB, E
<b>Primary Accession</b>	<a href="#">P35900</a>
<b>Reactivity</b>	Mouse, Human
<b>Host</b>	Rabbit
<b>Clonality</b>	Polyclonal
<b>Isotype</b>	Rabbit IgG
<b>Calculated MW</b>	48487
<b>Antigen Region</b>	377-401

## Additional Information

---

<b>Gene ID</b>	54474
<b>Other Names</b>	Keratin, type I cytoskeletal 20, Cytokeratin-20, CK-20, Keratin-20, K20, Protein IT, KRT20
<b>Target/Specificity</b>	This KRT20 antibody is generated from rabbits immunized with a KLH conjugated synthetic peptide between 377-401 amino acids from the C-terminal region of human KRT20.
<b>Dilution</b>	WB~~1:1000 E~~Use at an assay dependent concentration.
<b>Format</b>	Purified polyclonal antibody supplied in PBS with 0.09% (W/V) sodium azide. This antibody is purified through a protein A column, followed by peptide affinity purification.
<b>Storage</b>	Maintain refrigerated at 2-8°C for up to 2 weeks. For long term storage store at -20°C in small aliquots to prevent freeze-thaw cycles.
<b>Precautions</b>	KRT20 Antibody (C-term) is for research use only and not for use in diagnostic or therapeutic procedures.

## Protein Information

---

<b>Name</b>	KRT20
<b>Function</b>	Plays a significant role in maintaining keratin filament organization in intestinal epithelia. When phosphorylated, plays a role in the secretion of mucin in the small intestine (By similarity).
<b>Cellular Location</b>	Cytoplasm

## Tissue Location

Expressed predominantly in the intestinal epithelium. Expressed in luminal cells of colonic mucosa. Also expressed in the Merkel cells of keratinized oral mucosa; specifically at the tips of some rete ridges of the gingival mucosa, in the basal layer of the palatal mucosa and in the taste buds of lingual mucosa

## Background

---

Plays a significant role in maintaining keratin filament organization in intestinal epithelia. When phosphorylated, plays a role in the secretion of mucin in the small intestine (By similarity).

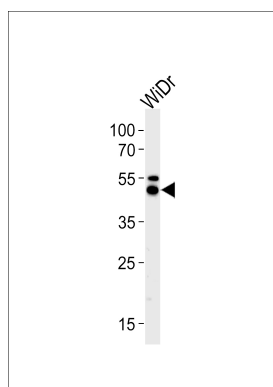
## References

---

Moll R., et al. Differentiation 53:75-93(1993).  
Ota T., et al. Nat. Genet. 36:40-45(2004).  
Zhou Q., et al. J. Biol. Chem. 281:16453-16461(2006).  
Calnek D., et al. Differentiation 53:95-104(1993).  
Moll R., et al. J. Cell Biol. 111:567-580(1990).

## Images

---



KRT20 Antibody (C-term) (Cat. #AP20533b) western blot analysis in WiDr cell line lysates (35ug/lane). This demonstrates the KRT20 antibody detected the KRT20 protein (arrow).

Please note: All products are 'FOR RESEARCH USE ONLY. NOT FOR USE IN DIAGNOSTIC OR THERAPEUTIC PROCEDURES'.