

# ZNF560 Antibody (Center)

Affinity Purified Rabbit Polyclonal Antibody (Pab)

Catalog # AP20538c

## Product Information

---

Application	WB, E
Primary Accession	<a href="#">Q96MR9</a>
Reactivity	Human
Host	Rabbit
Clonality	Polyclonal
Isotype	Rabbit IgG
Calculated MW	91121
Antigen Region	301-325

## Additional Information

---

Gene ID	147741
Other Names	Zinc finger protein 560, ZNF560
Target/Specificity	This ZNF560 antibody is generated from rabbits immunized with a KLH conjugated synthetic peptide between 301-325 amino acids from the Central region of human ZNF560.
Dilution	WB~~1:1000 E~~Use at an assay dependent concentration.
Format	Purified polyclonal antibody supplied in PBS with 0.09% (W/V) sodium azide. This antibody is purified through a protein A column, followed by peptide affinity purification.
Storage	Maintain refrigerated at 2-8°C for up to 2 weeks. For long term storage store at -20°C in small aliquots to prevent freeze-thaw cycles.
Precautions	ZNF560 Antibody (Center) is for research use only and not for use in diagnostic or therapeutic procedures.

## Protein Information

---

Name	ZNF560
Function	May be involved in transcriptional regulation.
Cellular Location	Nucleus.

## Background

---

May be involved in transcriptional regulation.

## References

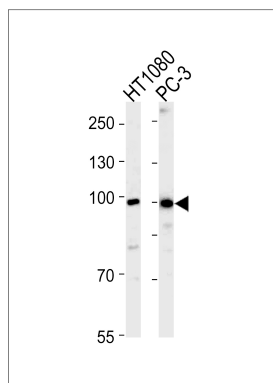
---

Ota T., et al. Nat. Genet. 36:40-45(2004).

Sjoeblom T., et al. Science 314:268-274(2006).

## Images

---



ZNF560 Antibody (Center) (Cat. #AP20538c) western blot analysis in HT1080,PC-3 cell line lysates (35ug/lane).This demonstrates the ZNF560 antibody detected the ZNF560 protein (arrow).

Please note: All products are 'FOR RESEARCH USE ONLY. NOT FOR USE IN DIAGNOSTIC OR THERAPEUTIC PROCEDURES'.