

ZNF192 Antibody (Center)

Purified Rabbit Polyclonal Antibody (Pab)

Catalog # AP20547a

Product Information

Application	WB, E
Primary Accession	Q15776
Reactivity	Human
Host	Rabbit
Clonality	Polyclonal
Isotype	Rabbit IgG
Clone Names	RB42876
Calculated MW	65816

Additional Information

Gene ID	7745
Other Names	Zinc finger protein with KRAB and SCAN domains 8, LD5-1, Zinc finger protein 192, ZKSCAN8, ZNF192
Target/Specificity	This ZNF192 antibody is generated from a rabbit immunized with a KLH conjugated synthetic peptide between 184-206 amino acids from the Central region of human ZNF192.
Dilution	WB~~1:1000 E~~Use at an assay dependent concentration.
Format	Purified polyclonal antibody supplied in PBS with 0.09% (W/V) sodium azide. This antibody is purified through a protein A column, followed by peptide affinity purification.
Storage	Maintain refrigerated at 2-8°C for up to 2 weeks. For long term storage store at -20°C in small aliquots to prevent freeze-thaw cycles.
Precautions	ZNF192 Antibody (Center) is for research use only and not for use in diagnostic or therapeutic procedures.

Protein Information

Name	ZKSCAN8
Synonyms	ZNF192
Function	May be involved in transcriptional regulation.
Cellular Location	Nucleus {ECO:0000255 PROSITE-ProRule:PRU00187}.

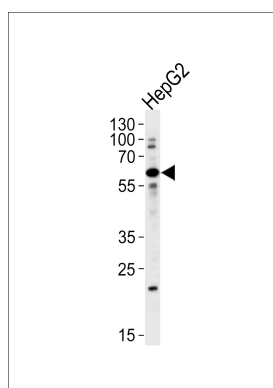
Background

May be involved in transcriptional regulation.

References

Lee P.L.,et al.Genomics 43:191-201(1997). Mungall A.J.,et al.Nature 425:805-811(2003). Mural R.J.,et al. Submitted (JUL-2005) to the EMBL/GenBank/DDBJ databases. Beutler E.,et al.Blood Cells Mol. Dis. 21:207-216(1995). Dephoure N.,et al.Proc. Natl. Acad. Sci. U.S.A. 105:10762-10767(2008).

Images



ZNF192 Antibody (Center) (Cat.# AP20547a) western blot analysis in HepG2 cell line lysates (35ug/lane). This demonstrates that the ZNF192 antibody detected the ZNF192 protein (arrow).

Please note: All products are 'FOR RESEARCH USE ONLY. NOT FOR USE IN DIAGNOSTIC OR THERAPEUTIC PROCEDURES'.