

# IQCF6 Antibody (N-term)

Purified Rabbit Polyclonal Antibody (Pab)

Catalog # AP20551a

## Product Information

---

Application	WB, E
Primary Accession	<a href="#">A8MYZ5</a>
Reactivity	Human
Host	Rabbit
Clonality	Polyclonal
Isotype	Rabbit IgG
Clone Names	RB44735
Calculated MW	13059

## Additional Information

---

Gene ID	440956
Other Names	IQ domain-containing protein F6, IQCF6
Target/Specificity	This IQCF6 antibody is generated from a rabbit immunized with a KLH conjugated synthetic peptide between 1-30 amino acids from the N-terminal region of human IQCF6.
Dilution	WB~~1:1000 E~~Use at an assay dependent concentration.
Format	Purified polyclonal antibody supplied in PBS with 0.09% (W/V) sodium azide. This antibody is purified through a protein A column, followed by peptide affinity purification.
Storage	Maintain refrigerated at 2-8°C for up to 2 weeks. For long term storage store at -20°C in small aliquots to prevent freeze-thaw cycles.
Precautions	IQCF6 Antibody (N-term) is for research use only and not for use in diagnostic or therapeutic procedures.

## Protein Information

---

Name	IQCF6
------	-------

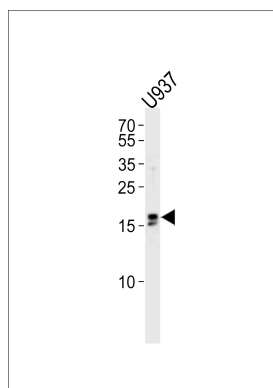
## References

---

Muzny D.M.,et al.Nature 440:1194-1198(2006).

## Images

---



Western blot analysis of lysate from U937 cell line, using IQCF6 Antibody (N-term)(Cat. #AP20551a). AP20551a was diluted at 1:1000 at each lane. A goat anti-rabbit IgG H&L(HRP) at 1:5000 dilution was used as the secondary antibody. Lysate at 35ug per lane.

Please note: All products are 'FOR RESEARCH USE ONLY. NOT FOR USE IN DIAGNOSTIC OR THERAPEUTIC PROCEDURES'.