

PRB4 Antibody (Center)

Purified Rabbit Polyclonal Antibody (Pab)

Catalog # AP20557c

Product Information

Application	WB, E
Primary Accession	P10163
Reactivity	Human
Host	Rabbit
Clonality	Polyclonal
Isotype	Rabbit IgG
Clone Names	RB44408
Calculated MW	31326

Additional Information

Other Names	Basic salivary proline-rich protein 4, Salivary proline-rich protein Po, Parotid o protein, Salivary proline-rich protein II-1, Protein N1, Glycosylated protein A, Peptide P-D, Proline-rich peptide IB-5, PRB4
Target/Specificity	This PRB4 antibody is generated from a rabbit immunized with a KLH conjugated synthetic peptide between 100-130 amino acids from the Central region of human PRB4.
Dilution	WB~~1:1000 E~~Use at an assay dependent concentration.
Format	Purified polyclonal antibody supplied in PBS with 0.09% (W/V) sodium azide. This antibody is purified through a protein A column, followed by peptide affinity purification.
Storage	Maintain refrigerated at 2-8°C for up to 2 weeks. For long term storage store at -20°C in small aliquots to prevent freeze-thaw cycles.
Precautions	PRB4 Antibody (Center) is for research use only and not for use in diagnostic or therapeutic procedures.

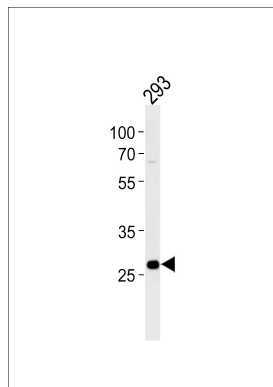
Protein Information

Name	PRB4
Cellular Location	Secreted.

References

Maeda N.,et al.J. Biol. Chem. 260:11123-11130(1985).
Lyons K.M.,et al.Genetics 120:267-278(1988).
Scherer S.E.,et al.Nature 440:346-351(2006).
Kauffman D.L.,et al.Crit. Rev. Oral Biol. Med. 4:287-292(1993).
Azen E.A.,et al.Am. J. Hum. Genet. 58:143-153(1996).

Images



Western blot analysis of lysate from 293 cell line, using PRB4 Antibody (Center) (Cat. #AP20557c). AP20557c was diluted at 1:1000 at each lane. A goat anti-rabbit IgG H&L(HRP) at 1:5000 dilution was used as the secondary antibody. Lysate at 35ug.

Please note: All products are 'FOR RESEARCH USE ONLY. NOT FOR USE IN DIAGNOSTIC OR THERAPEUTIC PROCEDURES'.