

# BICC1 Antibody (N-term)

Purified Rabbit Polyclonal Antibody (Pab)

Catalog # AP20561a

## Product Information

---

Application	WB, E
Primary Accession	<a href="#">Q9H694</a>
Reactivity	Human
Host	Rabbit
Clonality	Polyclonal
Isotype	Rabbit IgG
Clone Names	RB41523
Calculated MW	104844

## Additional Information

---

Gene ID	80114
Other Names	Protein bicaudal C homolog 1, Bic-C, BICC1
Target/Specificity	This BICC1 antibody is generated from a rabbit immunized with a KLH conjugated synthetic peptide between 75-107 amino acids from the N-terminal region of human BICC1.
Dilution	WB~~1:500 E~~Use at an assay dependent concentration.
Format	Purified polyclonal antibody supplied in PBS with 0.05% (V/V) Proclin 300. This antibody is purified through a protein A column, followed by peptide affinity purification.
Storage	Maintain refrigerated at 2-8°C for up to 2 weeks. For long term storage store at -20°C in small aliquots to prevent freeze-thaw cycles.
Precautions	BICC1 Antibody (N-term) is for research use only and not for use in diagnostic or therapeutic procedures.

## Protein Information

---

Name	BICC1
Function	Putative RNA-binding protein. Acts as a negative regulator of Wnt signaling. May be involved in regulating gene expression during embryonic development.
Cellular Location	Cytoplasm.

## Background

Putative RNA-binding protein. Acts as a negative regulator of Wnt signaling. May be involved in regulating gene expression during embryonic development.

## References

Ferreira E.N.,et al.Submitted (AUG-2004) to the EMBL/GenBank/DDBJ databases.

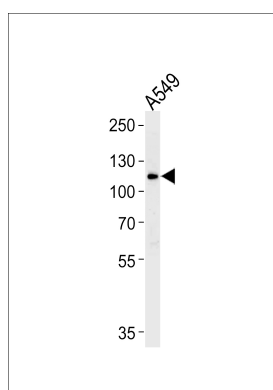
Ota T.,et al.Nat. Genet. 36:40-45(2004).

Olsen J.V.,et al.Cell 127:635-648(2006).

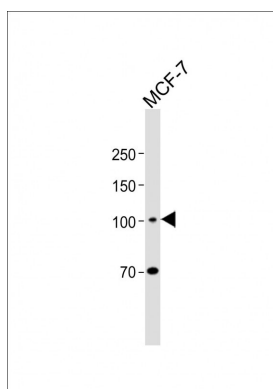
Choudhary C.,et al.Science 325:834-840(2009).

Olsen J.V.,et al.Sci. Signal. 3:RA3-RA3(2010).

## Images



Western blot analysis of lysate from A549 cell line, using BICC1 Antibody (N-term)(Cat. #AP20561a). AP20561a was diluted at 1:1000. A goat anti-rabbit IgG H&L(HRP) at 1:5000 dilution was used as the secondary antibody. Lysate at 35ug.



All lanes: Anti-BICC1 Antibody (N-term) at 1:500 dilution + MCF-7 whole cell lysate Lysates/proteins at 20 µg per lane. Secondary: Goat Anti-Rabbit IgG, (H+L), Peroxidase conjugated (ASP1615) at 1/15000 dilution. Observed band size: 105 KDa Blocking/Dilution buffer: 5% NFDm/TBST.

Please note: All products are 'FOR RESEARCH USE ONLY. NOT FOR USE IN DIAGNOSTIC OR THERAPEUTIC PROCEDURES'.