

# PDCL Antibody (N-term)

Purified Rabbit Polyclonal Antibody (Pab)

Catalog # AP20562a

## Product Information

---

<b>Application</b>	WB, IHC-P, E
<b>Primary Accession</b>	<a href="#">Q13371</a>
<b>Reactivity</b>	Human, Rat, Mouse
<b>Host</b>	Rabbit
<b>Clonality</b>	Polyclonal
<b>Isotype</b>	Rabbit IgG
<b>Clone Names</b>	RB46970
<b>Calculated MW</b>	34282

## Additional Information

---

<b>Gene ID</b>	5082
<b>Other Names</b>	Phosducin-like protein, PHLP, PDCL, PHLOP1, PhLP1
<b>Target/Specificity</b>	This PDCL antibody is generated from a rabbit immunized with a KLH conjugated synthetic peptide between 1-30 amino acids from the N-terminal region of human PDCL.
<b>Dilution</b>	WB~~1:1000 IHC-P~~1:100~500 E~~Use at an assay dependent concentration.
<b>Format</b>	Purified polyclonal antibody supplied in PBS with 0.09% (W/V) sodium azide. This antibody is purified through a protein A column, followed by peptide affinity purification.
<b>Storage</b>	Maintain refrigerated at 2-8°C for up to 2 weeks. For long term storage store at -20°C in small aliquots to prevent freeze-thaw cycles.
<b>Precautions</b>	PDCL Antibody (N-term) is for research use only and not for use in diagnostic or therapeutic procedures.

## Protein Information

---

<b>Name</b>	PDCL
<b>Synonyms</b>	PHLOP1, PhLP1
<b>Function</b>	Acts as a positive regulator of hedgehog signaling and regulates ciliary function. [Isoform 2]: Acts as a negative regulator of heterotrimeric G proteins assembly by trapping the preloaded G beta subunits inside the CCT chaperonin.

## Background

Isoform 1: Functions as a co-chaperone for CCT in the assembly of heterotrimeric G protein complexes, facilitates the assembly of both Gbeta-Ggamma and RGS-Gbeta5 heterodimers.

## References

Lazarov M.E.,et al.Submitted (OCT-1997) to the EMBL/GenBank/DDBJ databases.

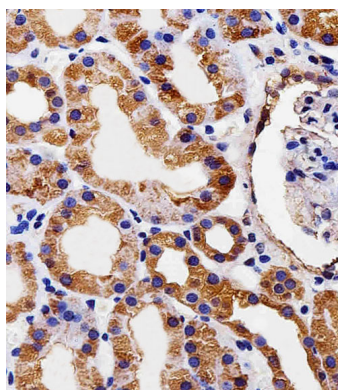
Wiemann S.,et al.Genome Res. 11:422-435(2001).

Ota T.,et al.Nat. Genet. 36:40-45(2004).

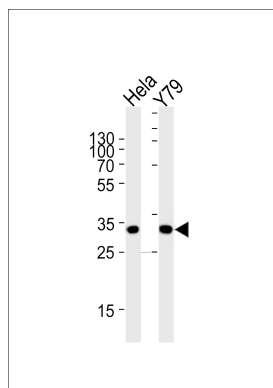
Humphray S.J.,et al.Nature 429:369-374(2004).

Mural R.J.,et al.Submitted (JUL-2005) to the EMBL/GenBank/DDBJ databases.

## Images



Immunohistochemical analysis of paraffin-embedded H.kidney section using PDCL Antibody (N-term)(Cat#AP20562a). AP20562a was diluted at 1:25 dilution. A peroxidase-conjugated goat anti-rabbit IgG at 1:400 dilution was used as the secondary antibody, followed by DAB staining.



Western blot analysis of lysates from HeLa, Y79 cell line (from left to right), using PDCL Antibody (N-term)(Cat. #AP20562a). AP20562a was diluted at 1:1000 at each lane. A goat anti-rabbit IgG H&L(HRP) at 1:5000 dilution was used as the secondary antibody. Lysates at 35ug per lane.

Please note: All products are 'FOR RESEARCH USE ONLY. NOT FOR USE IN DIAGNOSTIC OR THERAPEUTIC PROCEDURES'.