

EEF1B2 Antibody (Center)

Purified Rabbit Polyclonal Antibody (Pab)

Catalog # AP20573a

Product Information

Application	WB, IHC-P, IF, FC, E
Primary Accession	P24534
Reactivity	Human
Host	Rabbit
Clonality	Polyclonal
Isotype	Rabbit IgG
Clone Names	RB48012
Calculated MW	24764

Additional Information

Gene ID	1933
Other Names	Elongation factor 1-beta, EF-1-beta, EEF1B2, EEF1B, EF1B
Target/Specificity	This EEF1B2 antibody is generated from a rabbit immunized with a KLH conjugated synthetic peptide between 54-86 amino acids from the Central region of human EEF1B2.
Dilution	WB~~1:1000 IHC-P~~1:100~500 IF~~1:25 FC~~1:25 E~~Use at an assay dependent concentration.
Format	Purified polyclonal antibody supplied in PBS with 0.09% (W/V) sodium azide. This antibody is purified through a protein A column, followed by peptide affinity purification.
Storage	Maintain refrigerated at 2-8°C for up to 2 weeks. For long term storage store at -20°C in small aliquots to prevent freeze-thaw cycles.
Precautions	EEF1B2 Antibody (Center) is for research use only and not for use in diagnostic or therapeutic procedures.

Protein Information

Name	EEF1B2
Synonyms	EEF1B, EF1B
Function	Catalytic subunit of the guanine nucleotide exchange factor (GEF) (eEF1B subcomplex) of the eukaryotic elongation factor 1 complex (eEF1) (By similarity). Stimulates the exchange of GDP for GTP on elongation factor 1A

(eEF1A), probably by displacing GDP from the nucleotide binding pocket in eEF1A (By similarity).

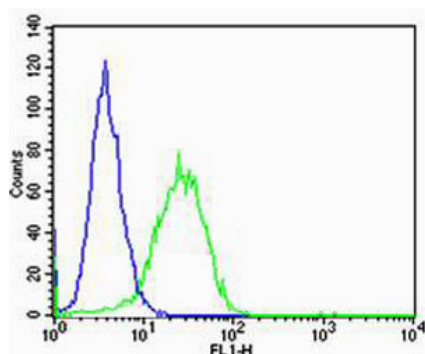
Background

EF-1-beta and EF-1-delta stimulate the exchange of GDP bound to EF-1-alpha to GTP.

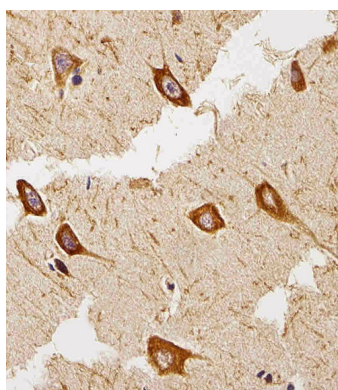
References

Sanders J.,et al.Nucleic Acids Res. 19:4551-4551(1991).
von der Kammer H.,et al.Biochem. Biophys. Res. Commun. 177:312-317(1991).
Kalnine N.,et al.Submitted (MAY-2003) to the EMBL/GenBank/DDBJ databases.
Ebert L.,et al.Submitted (JUN-2004) to the EMBL/GenBank/DDBJ databases.
Ota T.,et al.Nat. Genet. 36:40-45(2004).

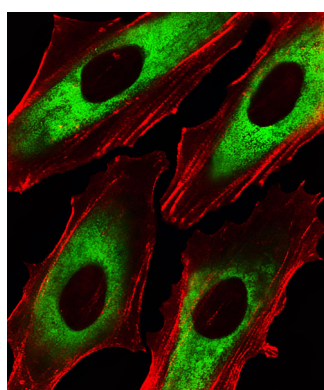
Images



Flow cytometric analysis of HeLa cells using EEf1B2 Antibody (Center)(green, Cat#AP20573a) compared to an isotype control of rabbit IgG(blue). AP20573a was diluted at 1:25 dilution. An Alexa Fluor® 488 goat anti-rabbit IgG at 1:400 dilution was used as the secondary antibody.

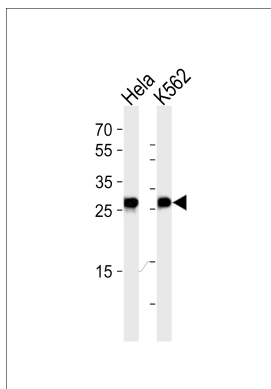


Immunohistochemical analysis of paraffin-embedded H. brain section using EEf1B2 Antibody (Center)(Cat#AP20573a). AP20573a was diluted at 1:25 dilution. A peroxidase-conjugated goat anti-rabbit IgG at 1:400 dilution was used as the secondary antibody, followed by DAB staining.



Fluorescent image of HeLa cells stained with EEf1B2 Antibody (Center)(Cat#AP20573a). AP20573a was diluted at 1:25 dilution. An Alexa Fluor 488-conjugated goat anti-rabbit IgG at 1:400 dilution was used as the secondary antibody (green). Cytoplasmic actin was counterstained with Alexa Fluor® 555 conjugated with Phalloidin (red).

Western blot analysis of lysates from HeLa, K562 cell line



(from left to right), using EEF1B2 Antibody (Center)(Cat. #AP20573a). AP20573a was diluted at 1:1000 at each lane. A goat anti-rabbit IgG H&L(HRP) at 1:5000 dilution was used as the secondary antibody. Lysates at 35ug per lane.

Please note: All products are 'FOR RESEARCH USE ONLY. NOT FOR USE IN DIAGNOSTIC OR THERAPEUTIC PROCEDURES'.