

# MPP7 Antibody (N-term)

Purified Rabbit Polyclonal Antibody (Pab)

Catalog # AP20581a

## Product Information

---

<b>Application</b>	WB, FC, IHC-P, E
<b>Primary Accession</b>	<a href="#">Q5T2T1</a>
<b>Reactivity</b>	Human, Rat, Mouse
<b>Host</b>	Rabbit
<b>Clonality</b>	Polyclonal
<b>Isotype</b>	Rabbit IgG
<b>Clone Names</b>	RB47949
<b>Calculated MW</b>	65524

## Additional Information

---

<b>Gene ID</b>	143098
<b>Other Names</b>	MAGUK p55 subfamily member 7, MPP7
<b>Target/Specificity</b>	This MPP7 antibody is generated from a rabbit immunized with a KLH conjugated synthetic peptide between 2-36 amino acids from the N-terminal region of human MPP7.
<b>Dilution</b>	WB~~1:1000 FC~~1:25 IHC-P~~1:100~500 E~~Use at an assay dependent concentration.
<b>Format</b>	Purified polyclonal antibody supplied in PBS with 0.05% (V/V) Proclin 300. This antibody is purified through a protein A column, followed by peptide affinity purification.
<b>Storage</b>	Maintain refrigerated at 2-8°C for up to 2 weeks. For long term storage store at -20°C in small aliquots to prevent freeze-thaw cycles.
<b>Precautions</b>	MPP7 Antibody (N-term) is for research use only and not for use in diagnostic or therapeutic procedures.

## Protein Information

---

<b>Name</b>	MPP7
<b>Function</b>	Acts as an important adapter that promotes epithelial cell polarity and tight junction formation via its interaction with DLG1. Involved in the assembly of protein complexes at sites of cell-cell contact.
<b>Cellular Location</b>	Membrane; Peripheral membrane protein. Lateral cell membrane; Peripheral

membrane protein. Cell junction, tight junction Cell junction, adherens junction. Cytoplasm, cell cortex. Cytoplasm Note=In epidermal cells, detected primarily at the lateral cell membrane.

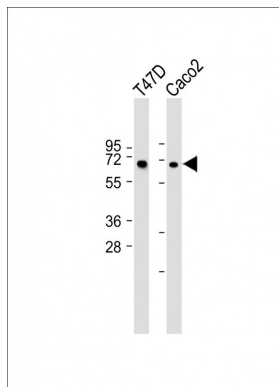
## Background

Acts as an important adapter that promotes epithelial cell polarity and tight junction formation via its interaction with DLG1. Involved in the assembly of protein complexes at sites of cell-cell contact.

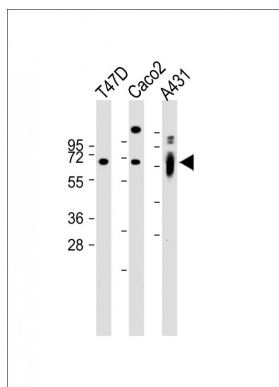
## References

Ota T.,et al.Nat. Genet. 36:40-45(2004).  
Deloukas P.,et al.Nature 429:375-381(2004).  
Mural R.J.,et al.Submitted (SEP-2005) to the EMBL/GenBank/DDBJ databases.  
Kato M.,et al.Int. J. Mol. Med. 13:333-338(2004).  
Wells C.D.,et al.Cell 125:535-548(2006).

## Images

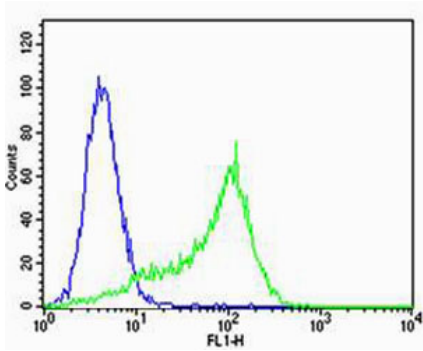
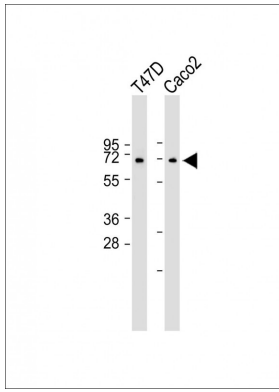


All lanes : Anti-MPP7 Antibody (N-term) at 1:1000 dilution  
Lane 1: T47D whole cell lysate Lane 2: Caco2 whole cell lysate Lysates/proteins at 20 µg per lane. Secondary Goat Anti-Rabbit IgG, (H+L), Peroxidase conjugated at 1/10000 dilution. Observed band size : 66kDa Blocking/Dilution buffer: 5% NFDM/TBST.

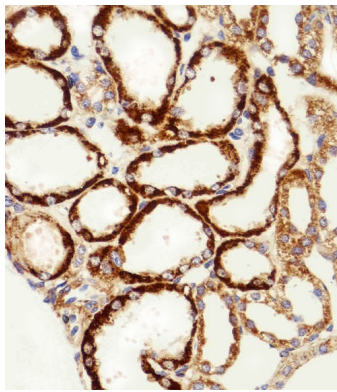


All lanes : Anti-MPP7 Antibody (N-term) at 1:1000 dilution  
Lane 1: T47D whole cell lysate Lane 2: Caco2 whole cell lysate Lane 3: A431 whole cell lysate Lysates/proteins at 20 µg per lane. Secondary Goat Anti-Rabbit IgG, (H+L), Peroxidase conjugated(ASP1615) at 1/10000 dilution. Observed band size : 66kDa Blocking/Dilution buffer: 5% NFDM/TBST.

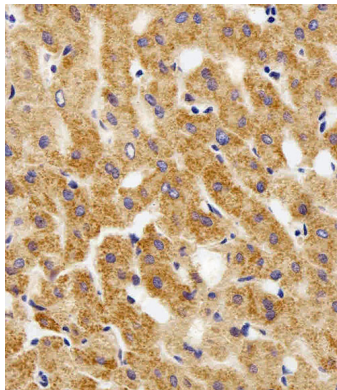
All lanes : Anti-MPP7 Antibody (N-term) at 1:1000 dilution  
Lane 1: T47D whole cell lysate Lane 2: Caco2 whole cell lysate Lysates/proteins at 20 µg per lane. Secondary Goat Anti-Rabbit IgG, (H+L), Peroxidase conjugated at 1/10000 dilution. Observed band size : 66kDa Blocking/Dilution buffer: 5% NFDM/TBST.



Flow cytometric analysis of HeLa cells using MPP7 Antibody (N-term)(green, Cat#AP20581a) compared to an isotype control of rabbit IgG(blue). AP20581a was diluted at 1:25 dilution. An Alexa Fluor® 488 goat anti-rabbit IgG at 1:400 dilution was used as the secondary antibody.

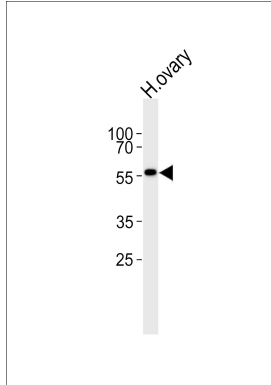
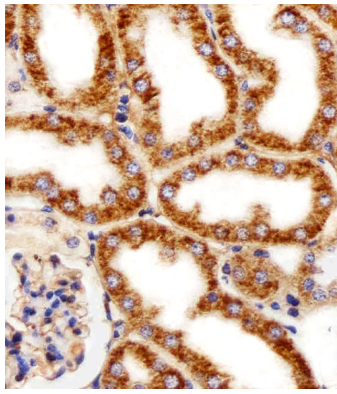


Immunohistochemical analysis of paraffin-embedded H. kidney section using MPP7 Antibody (N-term)(Cat#AP20581a). AP20581a was diluted at 1:100 dilution. A peroxidase-conjugated goat anti-rabbit IgG at 1:400 dilution was used as the secondary antibody, followed by DAB staining.



Immunohistochemical analysis of paraffin-embedded H. liver section using MPP7 Antibody (N-term)(Cat#AP20581a). AP20581a was diluted at 1:100 dilution. A peroxidase-conjugated goat anti-rabbit IgG at 1:400 dilution was used as the secondary antibody, followed by DAB staining.

Immunohistochemical analysis of paraffin-embedded M. kidney section using MPP7 Antibody (N-term)(Cat#AP20581a). AP20581a was diluted at 1:25 dilution. A peroxidase-conjugated goat anti-rabbit IgG at 1:400 dilution was used as the secondary antibody, followed by DAB staining.



Western blot analysis of lysate from human ovary tissue lysate, using MPP7 Antibody (N-term) (Cat. #AP20581a). AP20581a was diluted at 1:1000. A goat anti-rabbit IgG H&L(HRP) at 1:5000 dilution was used as the secondary antibody. Lysate at 35ug.

Please note: All products are 'FOR RESEARCH USE ONLY. NOT FOR USE IN DIAGNOSTIC OR THERAPEUTIC PROCEDURES'.