

IL18 Antibody (C-term)

Purified Rabbit Polyclonal Antibody (Pab)

Catalog # AP20583c

Product Information

Application	WB, IHC-P, IF, FC, E
Primary Accession	Q14116
Reactivity	Human
Host	Rabbit
Clonality	Polyclonal
Isotype	Rabbit IgG
Clone Names	RB48154
Calculated MW	22326

Additional Information

Gene ID	3606
Other Names	Interleukin-18, IL-18, Ibctadecin, Interferon gamma-inducing factor, IFN-gamma-inducing factor, Interleukin-1 gamma, IL-1 gamma, IL18, IGIF, IL1F4
Target/Specificity	This IL18 antibody is generated from a rabbit immunized with a KLH conjugated synthetic peptide between 155-188 amino acids from the C-terminal region of human IL18.
Dilution	WB~~1:1000 IHC-P~~1:100~500 IF~~1:25 FC~~1:25 E~~Use at an assay dependent concentration.
Format	Purified polyclonal antibody supplied in PBS with 0.05% (V/V) Proclin 300. This antibody is prepared by Saturated Ammonium Sulfate (SAS) precipitation followed by dialysis against PBS.
Storage	Maintain refrigerated at 2-8°C for up to 2 weeks. For long term storage store at -20°C in small aliquots to prevent freeze-thaw cycles.
Precautions	IL18 Antibody (C-term) is for research use only and not for use in diagnostic or therapeutic procedures.

Protein Information

Name	IL18 (HGNC:5986)
Synonyms	IGIF, IL1F4
Function	Pro-inflammatory cytokine primarily involved in epithelial barrier repair,

polarized T-helper 1 (Th1) cell and natural killer (NK) cell immune responses (PubMed:[10653850](#)). Upon binding to IL18R1 and IL18RAP, forms a signaling ternary complex which activates NF-kappa-B, triggering synthesis of inflammatory mediators (PubMed:[14528293](#), PubMed:[25500532](#), PubMed:[37993714](#)). Synergizes with IL12/interleukin-12 to induce IFNG synthesis from T-helper 1 (Th1) cells and natural killer (NK) cells (PubMed:[10653850](#)). Involved in transduction of inflammation downstream of pyroptosis: its mature form is specifically released in the extracellular milieu by passing through the gasdermin-D (GSDMD) pore (PubMed:[33883744](#)).

Cellular Location

Cytoplasm, cytosol. Secreted. Note=The precursor is cytosolic (PubMed:[33883744](#)). In response to inflammasome-activating signals, cleaved and secreted (PubMed:[33883744](#), PubMed:[37993712](#), PubMed:[37993714](#)). Mature form is secreted and released in the extracellular milieu by passing through the gasdermin-D (GSDMD) pore (PubMed:[33883744](#), PubMed:[37993714](#)). In contrast, the precursor form is not released, due to the presence of an acidic region that is proteolytically removed by CASP1, CASP4 or CASP5 during maturation (PubMed:[33883744](#), PubMed:[37993714](#)). The secretion is dependent on protein unfolding and facilitated by the cargo receptor TMED10 (PubMed:[32272059](#)).

Tissue Location

[Isoform 2]: Expressed in ovarian carcinoma but undetectable in normal ovarian epithelial cells. Resistant to proteolytic activation by caspase-1 and -4

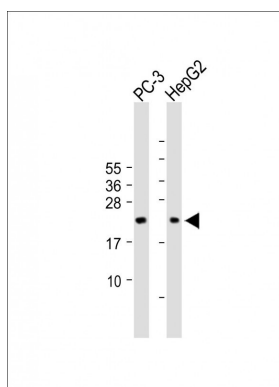
Background

Augments natural killer cell activity in spleen cells and stimulates interferon gamma production in T-helper type I cells.

References

Ushio S.,et al.J. Immunol. 156:4274-4279(1996).
Gaggero A.,et al.Oncogene 23:7552-7560(2004).
Yong D.,et al.Submitted (JUL-1998) to the EMBL/GenBank/DDBJ databases.
Liu J.,et al.Submitted (JUL-2001) to the EMBL/GenBank/DDBJ databases.
Ebert L.,et al.Submitted (JUN-2004) to the EMBL/GenBank/DDBJ databases.

Images



All lanes : Anti-IL18 Antibody (C-term) at 1:2000 dilution
Lane 1: PC-3 whole cell lysate Lane 2: HepG2 whole cell lysate Lysates/proteins at 20 µg per lane. Secondary Goat Anti-Rabbit IgG, (H+L), Peroxidase conjugated (ASP1615) at 1/15000 dilution. Observed band size : 22kDa
Blocking/Dilution buffer: 5% NFDM/TBST.

Citations

- [Expression and clinical value of NLRP1 and NLRC4 inflammasomes in prostate cancer](#)

Please note: All products are 'FOR RESEARCH USE ONLY. NOT FOR USE IN DIAGNOSTIC OR THERAPEUTIC PROCEDURES'.