

TUBA1C Antibody (N-term)

Purified Rabbit Polyclonal Antibody (Pab)

Catalog # AP20591a

Product Information

Application	WB, FC, E
Primary Accession	Q9BQE3
Reactivity	Human, Rat, Mouse
Host	Rabbit
Clonality	Polyclonal
Isotype	Rabbit IgG
Clone Names	RB47642
Calculated MW	49895

Additional Information

Gene ID	84790
Other Names	Tubulin alpha-1C chain, Alpha-tubulin 6, Tubulin alpha-6 chain, TUBA1C, TUBA6
Target/Specificity	This TUBA1C antibody is generated from a rabbit immunized with a KLH conjugated synthetic peptide between 26-60 amino acids from the N-terminal region of human TUBA1C.
Dilution	WB~~1:1000 FC~~1:25 E~~Use at an assay dependent concentration.
Format	Purified polyclonal antibody supplied in PBS with 0.09% (W/V) sodium azide. This antibody is purified through a protein A column, followed by peptide affinity purification.
Storage	Maintain refrigerated at 2-8°C for up to 2 weeks. For long term storage store at -20°C in small aliquots to prevent freeze-thaw cycles.
Precautions	TUBA1C Antibody (N-term) is for research use only and not for use in diagnostic or therapeutic procedures.

Protein Information

Name	TUBA1C
Synonyms	TUBA6
Function	Tubulin is the major constituent of microtubules, a cylinder consisting of laterally associated linear protofilaments composed of alpha- and beta-tubulin heterodimers. Microtubules grow by the addition of GTP-tubulin

dimers to the microtubule end, where a stabilizing cap forms. Below the cap, tubulin dimers are in GDP-bound state, owing to GTPase activity of alpha-tubulin.

Cellular Location

Cytoplasm, cytoskeleton.

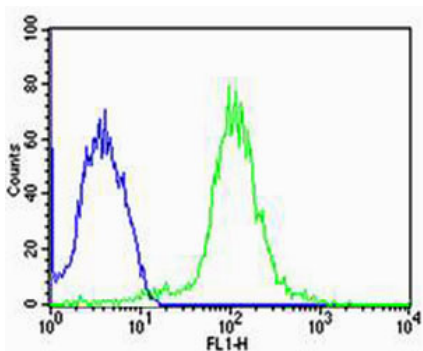
Background

Tubulin is the major constituent of microtubules. It binds two moles of GTP, one at an exchangeable site on the beta chain and one at a non-exchangeable site on the alpha chain.

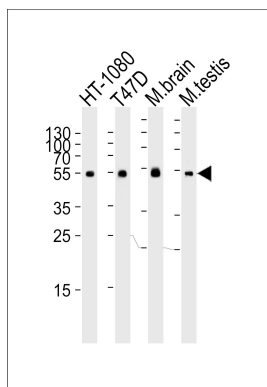
References

Lubec G.,et al.Submitted (MAR-2007) to UniProtKB.
Olsen J.V.,et al.Cell 127:635-648(2006).
Daub H.,et al.Mol. Cell 31:438-448(2008).
Dephoure N.,et al.Proc. Natl. Acad. Sci. U.S.A. 105:10762-10767(2008).
Gauci S.,et al.Anal. Chem. 81:4493-4501(2009).

Images



Flow cytometric analysis of MCF-7 cells using TUBA1C Antibody (N-term)(green, Cat#AP20591a) compared to an isotype control of rabbit IgG(blue). AP20591a was diluted at 1:25 dilution. An Alexa Fluor® 488 goat anti-rabbit IgG at 1:400 dilution was used as the secondary antibody.



Western blot analysis of lysates from HT-1080, T47D cell line, mouse brain and testis tissue lysate (from left to right), using TUBA1C Antibody (N-term) (Cat. #AP20591a). AP20591a was diluted at 1:1000 at each lane. A goat anti-rabbit IgG H&L(HRP) at 1:5000 dilution was used as the secondary antibody. Lysates at 35ug per lane.

Please note: All products are 'FOR RESEARCH USE ONLY. NOT FOR USE IN DIAGNOSTIC OR THERAPEUTIC PROCEDURES'.