

EIF4G2 Antibody (N-term)

Purified Rabbit Polyclonal Antibody (Pab)
Catalog # AP20594a

Product Information

Application	WB, E
Primary Accession	P78344
Reactivity	Human, Rat, Mouse
Host	Rabbit
Clonality	Polyclonal
Isotype	Rabbit IgG
Clone Names	RB48330
Calculated MW	102362

Additional Information

Gene ID	1982
Other Names	Eukaryotic translation initiation factor 4 gamma 2, eIF-4-gamma 2, eIF-4G 2, eIF4G 2, Death-associated protein 5, DAP-5, p97, EIF4G2 (HGNC:3297)
Target/Specificity	This EIF4G2 antibody is generated from a rabbit immunized with a KLH conjugated synthetic peptide between 12-44 amino acids from the N-terminal region of human EIF4G2.
Dilution	WB~~1:1000 E~~Use at an assay dependent concentration.
Format	Purified polyclonal antibody supplied in PBS with 0.09% (W/V) sodium azide. This antibody is purified through a protein A column, followed by peptide affinity purification.
Storage	Maintain refrigerated at 2-8°C for up to 2 weeks. For long term storage store at -20°C in small aliquots to prevent freeze-thaw cycles.
Precautions	EIF4G2 Antibody (N-term) is for research use only and not for use in diagnostic or therapeutic procedures.

Protein Information

Name	EIF4G2 (HGNC:3297)
Function	Appears to play a role in the switch from cap-dependent to IRES-mediated translation during mitosis, apoptosis and viral infection. Cleaved by some caspases and viral proteases.
Tissue Location	Ubiquitously expressed in all adult tissues examined, with high levels in

skeletal muscle and heart. Also expressed in fetal brain, lung, liver and kidney.

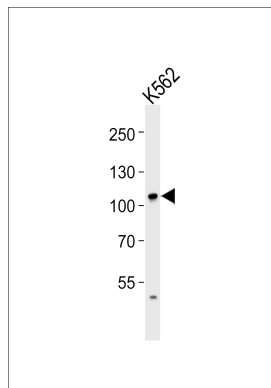
Background

Appears to play a role in the switch from cap-dependent to IRES-mediated translation during mitosis, apoptosis and viral infection. Cleaved by some caspases and viral proteases.

References

Imataka H., et al. *EMBO J.* 16:817-825(1997).
Yamanaka S., et al. *Genes Dev.* 11:321-333(1997).
Levy-Strumpf N., et al. *Mol. Cell. Biol.* 17:1615-1625(1997).
Totoki Y., et al. Submitted (APR-2005) to the EMBL/GenBank/DDBJ databases.
Taylor T.D., et al. *Nature* 440:497-500(2006).

Images



Western blot analysis of lysate from K562 cell line, using EIF4G2 Antibody (N-term) (Cat. #AP20594a). AP20594a was diluted at 1:1000. A goat anti-rabbit IgG H&L(HRP) at 1:5000 dilution was used as the secondary antibody. Lysate at 35ug.

Please note: All products are 'FOR RESEARCH USE ONLY. NOT FOR USE IN DIAGNOSTIC OR THERAPEUTIC PROCEDURES'.