

REG3A Antibody (C-term)

Purified Rabbit Polyclonal Antibody (Pab)

Catalog # AP20597c

Product Information

Application	WB, FC, E
Primary Accession	Q06141
Reactivity	Human
Host	Rabbit
Clonality	Polyclonal
Isotype	Rabbit IgG
Clone Names	RB48666
Calculated MW	19395

Additional Information

Gene ID	5068
Other Names	Regenerating islet-derived protein 3-alpha, REG-3-alpha, Hepatointestinal pancreatic protein, HIP/PAP, Human proislet peptide, Pancreatitis-associated protein 1, Regenerating islet-derived protein III-alpha, Reg III-alpha, Regenerating islet-derived protein 3-alpha 165 kDa form, Regenerating islet-derived protein 3-alpha 15 kDa form, REG3A, HIP, PAP, PAP1
Target/Specificity	This REG3A antibody is generated from a rabbit immunized with a KLH conjugated synthetic peptide between 129-163 amino acids from the C-terminal region of human REG3A.
Dilution	WB~~1:1000 FC~~1:25 E~~Use at an assay dependent concentration.
Format	Purified polyclonal antibody supplied in PBS with 0.09% (W/V) sodium azide. This antibody is purified through a protein A column, followed by peptide affinity purification.
Storage	Maintain refrigerated at 2-8°C for up to 2 weeks. For long term storage store at -20°C in small aliquots to prevent freeze-thaw cycles.
Precautions	REG3A Antibody (C-term) is for research use only and not for use in diagnostic or therapeutic procedures.

Protein Information

Name	REG3A (HGNC:8601)
Function	[Regenerating islet-derived protein 3-alpha 15 kDa form]: Bactericidal C-type lectin which acts exclusively against Gram-positive bacteria and mediates

bacterial killing by binding to surface-exposed carbohydrate moieties of peptidoglycan (PubMed:[16931762](#)). Binds membrane phospholipids and kills bacteria by forming a hexameric membrane-permeabilizing oligomeric pore (PubMed:[24256734](#)).

Cellular Location

Secreted. Note=Found in the apical region of pancreatic acinar cells

Tissue Location

Expressed by keratinocytes (PubMed:27830702). Highly expressed in epidermal keratinocytes of psoriasis patients (at protein level) (PubMed:22727489). Constitutively expressed in intestine. Low expression is found in healthy pancreas. Overexpressed during the acute phase of pancreatitis and in some patients with chronic pancreatitis (PubMed:1469087).

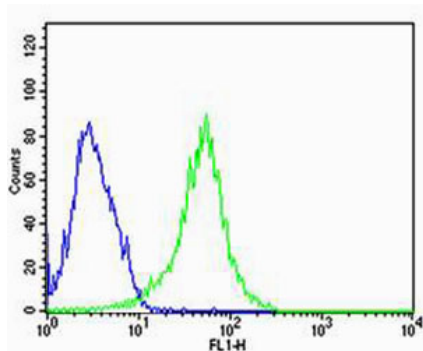
Background

Bactericidal C-type lectin which acts exclusively against Gram-positive bacteria and mediates bacterial killing by binding to surface-exposed carbohydrate moieties of peptidoglycan. Regulates keratinocyte proliferation and differentiation after skin injury via activation of EXTL3-PI3K-AKT signaling pathway.

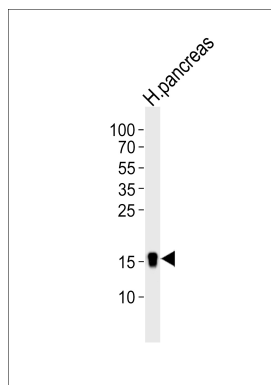
References

Itoh T.,et al.Biochim. Biophys. Acta 1172:184-186(1993).
Orelle B.,et al.J. Clin. Invest. 90:2284-2291(1992).
Lasserre C.,et al.Cancer Res. 52:5089-5095(1992).
Dusetti N.J.,et al.Genomics 19:108-114(1994).
Lasserre C.,et al.Eur. J. Biochem. 224:29-38(1994).

Images



Flow cytometric analysis of HepG2 cells using REG3A Antibody (C-term)(green, Cat#AP20597c) compared to an isotype control of rabbit IgG(blue). AP20597c was diluted at 1:25 dilution. An Alexa Fluor® 488 goat anti-rabbit IgG at 1:400 dilution was used as the secondary antibody.



Western blot analysis of lysate from human pancreas tissue lysate, using REG3A Antibody (C-term)(Cat. #AP20597c). AP20597c was diluted at 1:1000. A goat anti-rabbit IgG H&L(HRP) at 1:5000 dilution was used as the secondary antibody. Lysate at 35ug.

Please note: All products are 'FOR RESEARCH USE ONLY. NOT FOR USE IN DIAGNOSTIC OR THERAPEUTIC PROCEDURES'.