

AGAP8 Antibody (C-term)

Purified Rabbit Polyclonal Antibody (Pab)

Catalog # AP20603c

Product Information

Application	WB, FC, IF, IHC-P, E
Primary Accession	Q5SRD3
Reactivity	Human
Host	Rabbit
Clonality	Polyclonal
Isotype	Rabbit IgG
Clone Names	RB48754

Additional Information

Other Names	Arf-GAP with GTPase, ANK repeat and PH domain-containing protein 8, AGAP-8, Centaurin-gamma-like family member 5, AGAP8, CTGLF5
Target/Specificity	This AGAP8 antibody is generated from a rabbit immunized with a KLH conjugated synthetic peptide between 498-531 amino acids from the C-terminal region of human AGAP8.
Dilution	WB~~1:1000 FC~~1:25 IF~~1:25 IHC-P~~1:100~500 E~~Use at an assay dependent concentration.
Format	Purified polyclonal antibody supplied in PBS with 0.09% (W/V) sodium azide. This antibody is purified through a protein A column, followed by peptide affinity purification.
Storage	Maintain refrigerated at 2-8°C for up to 2 weeks. For long term storage store at -20°C in small aliquots to prevent freeze-thaw cycles.
Precautions	AGAP8 Antibody (C-term) is for research use only and not for use in diagnostic or therapeutic procedures.

Protein Information

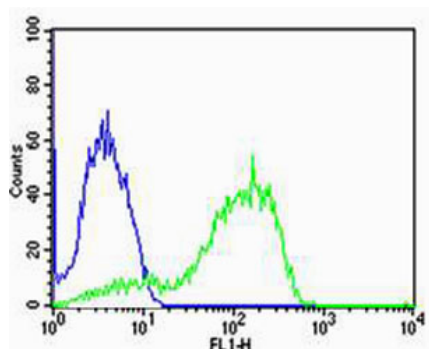
Background

Putative GTPase-activating protein (Potential).

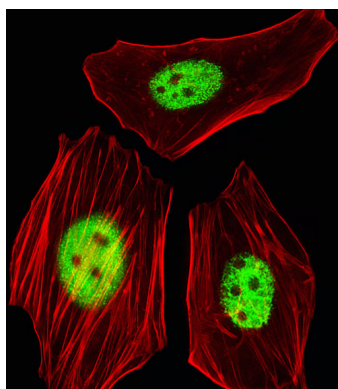
References

Deloukas P., et al. Nature 429:375-381(2004).

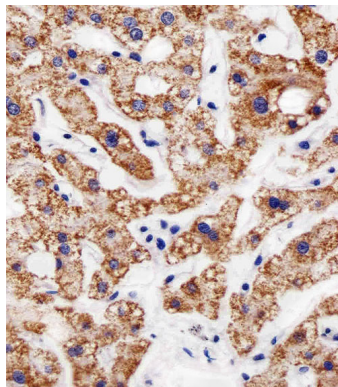
Images



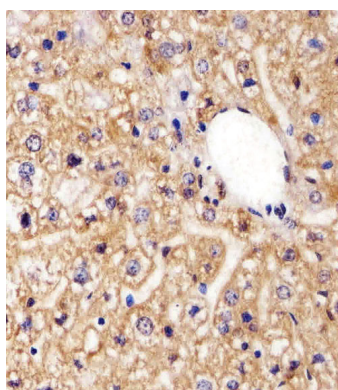
Flow cytometric analysis of MCF-7 cells using AGAP8 Antibody (C-term)(green, Cat#AP20603c) compared to an isotype control of rabbit IgG(blue). AP20603c was diluted at 1:25 dilution. An Alexa Fluor® 488 goat anti-rabbit IgG at 1:400 dilution was used as the secondary antibody.



Fluorescent image of HeLa cells stained with AGAP8 Antibody (C-term)(Cat#AP20603c). AP20603c was diluted at 1:25 dilution. An Alexa Fluor 488-conjugated goat anti-rabbit IgG at 1:400 dilution was used as the secondary antibody (green). Cytoplasmic actin was counterstained with Alexa Fluor® 555 conjugated with Phalloidin (red).

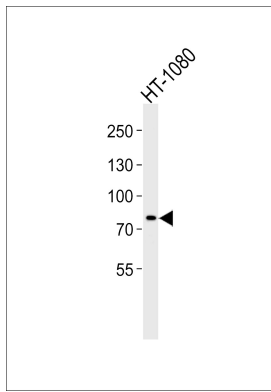


Immunohistochemical analysis of paraffin-embedded H. liver section using AGAP8 Antibody (C-term)(Cat#AP20603c). AP20603c was diluted at 1:25 dilution. A peroxidase-conjugated goat anti-rabbit IgG at 1:400 dilution was used as the secondary antibody, followed by DAB staining.



Immunohistochemical analysis of paraffin-embedded M. liver section using AGAP8 Antibody (C-term)(Cat#AP20603c). AP20603c was diluted at 1:25 dilution. A peroxidase-conjugated goat anti-rabbit IgG at 1:400 dilution was used as the secondary antibody, followed by DAB staining.

Western blot analysis of lysate from HT-1080 cell line, using AGAP8 Antibody (C-term)(Cat. # AP20603c). AP20603c was diluted at 1:1000. A goat anti-rabbit IgG H&L(HRP) at 1:5000 dilution was used as the secondary



antibody. Lysate at 35ug.

Please note: All products are 'FOR RESEARCH USE ONLY. NOT FOR USE IN DIAGNOSTIC OR THERAPEUTIC PROCEDURES'.