

# C13orf30 Antibody (C-term)

Purified Rabbit Polyclonal Antibody (Pab)

Catalog # AP20605c

## Product Information

---

<b>Application</b>	WB, IHC-P, E
<b>Primary Accession</b>	<a href="#">Q8N7L0</a>
<b>Reactivity</b>	Human
<b>Host</b>	Rabbit
<b>Clonality</b>	Polyclonal
<b>Isotype</b>	Rabbit IgG
<b>Clone Names</b>	RB46016
<b>Calculated MW</b>	16362

## Additional Information

---

<b>Gene ID</b>	144809
<b>Other Names</b>	Protein FAM216B, FAM216B, C13orf30
<b>Target/Specificity</b>	This C13orf30 antibody is generated from a rabbit immunized with a KLH conjugated synthetic peptide between 106-139 amino acids from the C-terminal region of human C13orf30.
<b>Dilution</b>	WB~~1:1000 IHC-P~~1:100~500 E~~Use at an assay dependent concentration.
<b>Format</b>	Purified polyclonal antibody supplied in PBS with 0.09% (W/V) sodium azide. This antibody is purified through a protein A column, followed by peptide affinity purification.
<b>Storage</b>	Maintain refrigerated at 2-8°C for up to 2 weeks. For long term storage store at -20°C in small aliquots to prevent freeze-thaw cycles.
<b>Precautions</b>	C13orf30 Antibody (C-term) is for research use only and not for use in diagnostic or therapeutic procedures.

## Protein Information

---

<b>Name</b>	FAM216B
<b>Synonyms</b>	C13orf30

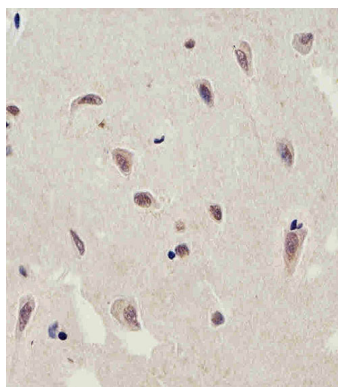
## References

---

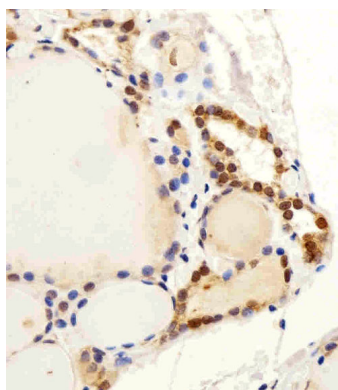
Ota T.,et al.Nat. Genet. 36:40-45(2004).  
Dunham A.,et al.Nature 428:522-528(2004).  
Mural R.J.,et al.Submitted (JUL-2005) to the EMBL/GenBank/DDBJ databases.

## Images

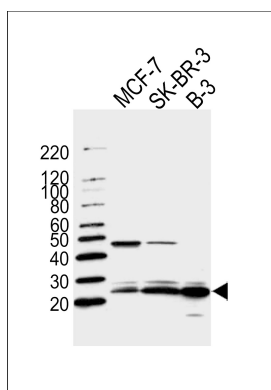
---



Immunohistochemical analysis of paraffin-embedded H.brain section using C13orf30 Antibody (C-term)(Cat#AP20605c). AP20605c was diluted at 1:25 dilution. A peroxidase-conjugated goat anti-rabbit IgG at 1:400 dilution was used as the secondary antibody, followed by DAB staining.



Immunohistochemical analysis of paraffin-embedded H.thyroid section using C13orf30 Antibody (C-term)(Cat#AP20605c). AP20605c was diluted at 1:25 dilution. A peroxidase-conjugated goat anti-rabbit IgG at 1:400 dilution was used as the secondary antibody, followed by DAB staining.



Western blot analysis of lysates from MCF-7, SK-BR-3, B-3 cell line (from left to right), using C13orf30 Antibody (C-term)(Cat. #AP20605c). AP20605c was diluted at 1:1000 at each lane. A goat anti-rabbit IgG H&L(HRP) at 1:5000 dilution was used as the secondary antibody. Lysates at 35ug per lane.

Please note: All products are 'FOR RESEARCH USE ONLY. NOT FOR USE IN DIAGNOSTIC OR THERAPEUTIC PROCEDURES'.