

DFFB Antibody (Center)

Purified Rabbit Polyclonal Antibody (Pab)

Catalog # AP20612c

Product Information

Application	WB, FC, IHC-P, E
Primary Accession	O76075
Reactivity	Human, Rat, Mouse
Host	Rabbit
Clonality	Polyclonal
Isotype	Rabbit IgG
Clone Names	RB48190
Calculated MW	39110

Additional Information

Gene ID	1677
Other Names	DNA fragmentation factor subunit beta, 3---, Caspase-activated deoxyribonuclease, CAD, Caspase-activated DNase, Caspase-activated nuclease, CPAN, DNA fragmentation factor 40 kDa subunit, DFF-40, DFFB, CAD, DFF2, DFF40
Target/Specificity	This DFFB antibody is generated from a rabbit immunized with a KLH conjugated synthetic peptide between 203-238 amino acids from the Central region of human DFFB.
Dilution	WB~~1:1000 FC~~1:25 IHC-P~~1:100~500 E~~Use at an assay dependent concentration.
Format	Purified polyclonal antibody supplied in PBS with 0.09% (W/V) sodium azide. This antibody is purified through a protein A column, followed by peptide affinity purification.
Storage	Maintain refrigerated at 2-8°C for up to 2 weeks. For long term storage store at -20°C in small aliquots to prevent freeze-thaw cycles.
Precautions	DFFB Antibody (Center) is for research use only and not for use in diagnostic or therapeutic procedures.

Protein Information

Name	DFFB
Synonyms	CAD, DFF2, DFF40

Function	Nuclease that induces DNA fragmentation and chromatin condensation during apoptosis. Degrades naked DNA and induces apoptotic morphology.
Cellular Location	Cytoplasm. Nucleus.

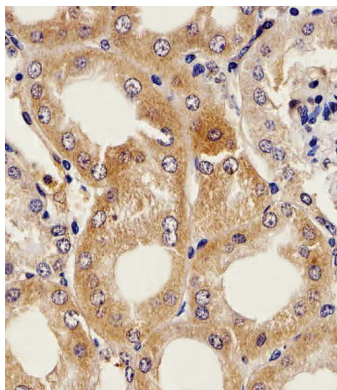
Background

Nuclease that induces DNA fragmentation and chromatin condensation during apoptosis. Degrades naked DNA and induces apoptotic morphology.

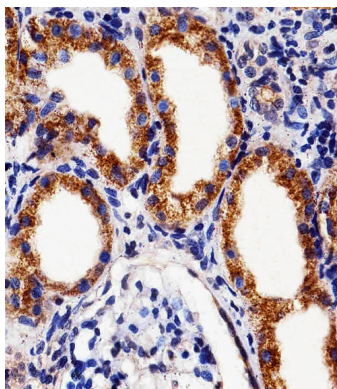
References

Liu X.,et al.Proc. Natl. Acad. Sci. U.S.A. 95:8461-8466(1998).
Mukae N.,et al.Proc. Natl. Acad. Sci. U.S.A. 95:9123-9128(1998).
Halenbeck R.,et al.Curr. Biol. 8:537-540(1998).
Nakagawara A.,et al.Submitted (JUN-1999) to the EMBL/GenBank/DDBJ databases.
Ota T.,et al.Nat. Genet. 36:40-45(2004).

Images

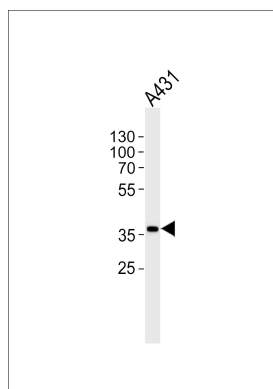
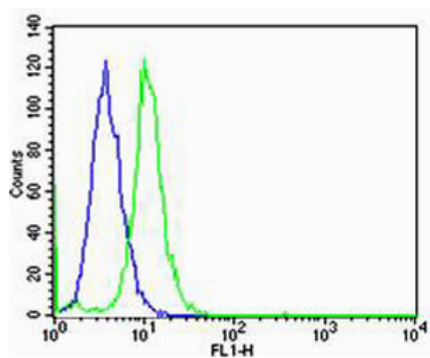


Immunohistochemical analysis of paraffin-embedded M.kidney section using DFFB Antibody (Center)(Cat#AP20612c). AP20612c was diluted at 1:25 dilution. A peroxidase-conjugated goat anti-rabbit IgG at 1:400 dilution was used as the secondary antibody, followed by DAB staining.



Immunohistochemical analysis of paraffin-embedded H.kidney section using DFFB Antibody (Center)(Cat#AP20612c). AP20612c was diluted at 1:25 dilution. A peroxidase-conjugated goat anti-rabbit IgG at 1:400 dilution was used as the secondary antibody, followed by DAB staining.

Flow cytometric analysis of Hela cells using DFFB Antibody (Center)(green, Cat#AP20612c) compared to an isotype control of rabbit IgG(blue). AP20612c was diluted at 1:25 dilution. An Alexa Fluor® 488 goat anti-rabbit IgG at 1:400 dilution was used as the secondary antibody.



Western blot analysis of lysate from A431 cell line, using DFFB Antibody (Center)(Cat. #AP20612c). AP20612c was diluted at 1:1000. A goat anti-rabbit IgG H&L(HRP) at 1:5000 dilution was used as the secondary antibody. Lysate at 35ug.

Please note: All products are 'FOR RESEARCH USE ONLY. NOT FOR USE IN DIAGNOSTIC OR THERAPEUTIC PROCEDURES'.