

# INHBA Antibody (C-term)

Purified Rabbit Polyclonal Antibody (Pab)

Catalog # AP20615c

## Product Information

---

<b>Application</b>	WB, E
<b>Primary Accession</b>	<a href="#">P08476</a>
<b>Reactivity</b>	Human
<b>Host</b>	Rabbit
<b>Clonality</b>	Polyclonal
<b>Isotype</b>	Rabbit IgG
<b>Clone Names</b>	RB47962
<b>Calculated MW</b>	47442

## Additional Information

---

<b>Gene ID</b>	3624
<b>Other Names</b>	Inhibin beta A chain, Activin beta-A chain, Erythroid differentiation protein, EDF, INHBA
<b>Target/Specificity</b>	This INHBA antibody is generated from a rabbit immunized with a KLH conjugated synthetic peptide between 377-410 amino acids from the C-terminal region of human INHBA.
<b>Dilution</b>	WB~~1:1000 E~~Use at an assay dependent concentration.
<b>Format</b>	Purified polyclonal antibody supplied in PBS with 0.05% (V/V) Proclin 300. This antibody is purified through a protein A column, followed by peptide affinity purification.
<b>Storage</b>	Maintain refrigerated at 2-8°C for up to 2 weeks. For long term storage store at -20°C in small aliquots to prevent freeze-thaw cycles.
<b>Precautions</b>	INHBA Antibody (C-term) is for research use only and not for use in diagnostic or therapeutic procedures.

## Protein Information

---

<b>Name</b>	INHBA
<b>Function</b>	Inhibins/activins are involved in regulating a number of diverse functions such as hypothalamic and pituitary hormone secretion, gonadal hormone secretion, germ cell development and maturation, erythroid differentiation, insulin secretion, nerve cell survival, embryonic axial development or bone growth, depending on their subunit composition.

## Background

---

Inhibins and activins inhibit and activate, respectively, the secretion of follitropin by the pituitary gland. Inhibins/activins are involved in regulating a number of diverse functions such as hypothalamic and pituitary hormone secretion, gonadal hormone secretion, germ cell development and maturation, erythroid differentiation, insulin secretion, nerve cell survival, embryonic axial development or bone growth, depending on their subunit composition. Inhibins appear to oppose the functions of activins.

## References

---

Mason A.J.,et al.Biochem. Biophys. Res. Commun. 135:957-964(1986).

Murata M.,et al.Proc. Natl. Acad. Sci. U.S.A. 85:2434-2438(1988).

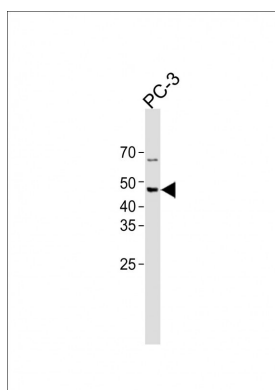
Tanimoto K.,et al.DNA Seq. 2:103-110(1991).

Hillier L.W.,et al.Nature 424:157-164(2003).

Stewart A.G.,et al.FEBS Lett. 206:329-334(1986).

## Images

---



All lanes: Anti-INHBA Antibody (C-term) at 1:1000 dilution + PC-3 whole cell lysate Lysates/proteins at 20 µg per lane. Secondary: Goat Anti-Rabbit IgG, (H+L), Peroxidase conjugated (ASP1615) at 1/15000 dilution. Observed band size: 47 KDa Blocking/Dilution buffer: 5% NFDM/TBST.

Please note: All products are 'FOR RESEARCH USE ONLY. NOT FOR USE IN DIAGNOSTIC OR THERAPEUTIC PROCEDURES'.